

Healthcare Design Awards 2023



Academy of Architecture for Health

AIA Knowledge Community

OFFICIAL PUBLICATION OF AIA ACADEMY OF ARCHITECTURE FOR HEALTH

Project: Sarasota Memorial Hospital – Venice, Venice, Florida | Architect: Flad Architects | Photo credit: Edward Caruso Photography

Contents

3 Healthcare Design Awards 2023

Category A: Built: Less than \$25 million in construction cost

- 4 Broadway Youth Center
Chicago, Illinois
Wheeler Kearns Architects
- 6 Family Tree Clinic
Minneapolis, Minnesota
Perkins&Will
- 8 Fora Health
Portland, Oregon
Holst Architecture
- 10 OhioHealth Neuroscience Wellness Center
Columbus, Ohio
Gensler

Category B: Built: More than \$25 million in construction cost

- 12 Alleghany Health Network Wexford Hospital
Wexford, Pennsylvania
HKS
- 14 Parkland Moody Outpatient Center
Dallas, Texas
HKS
- 16 Sarasota Memorial Hospital-Venice
Venice, Florida
Flad Architects
- 18 Seattle Children's Building Care: Diagnostic and Treatment Facility
Seattle, Washington
ZGF Architects
- 20 VA Worcester Community-Based Outpatient Clinic
Worcester, Massachusetts
SmithGroup

Category C: Renovations/Remodeled: Primarily built within existing hospital or clinical space or adaptive reuse of an existing building to a health care use

- 22 Penn State Health Milton S. Hershey Medical Center Children's Hospital
Vertical Expansion
Hershey, Pennsylvania
Payette

Jury

Eurico Francisco

AIA, (Chair)
Perkins&Will
Dallas, TX

Asia Allen

AIA
Gresham Smith
Nashville, TN

Walter Jones

AIA
Campus Transformation at
the MetroHealth System
Cleveland, OH

Ashley Mulhall

AIA
Orcutt | Winslow
Phoenix, AZ

Akshay Sangolli

AIA
Page Southerland Page, Inc.
Denver, CO

Molly M. Scanlon

FAIA
Univ of Arizona Mel & Enid Zuckerman
College of Public Health
Coronado, CA

The 2023 Healthcare Design Awards

The mission of the AIA Academy of Architecture for Health (AAH) is to provide knowledge which supports the design of healthy environments by creating education and networking opportunities for members of—and those touched by—the health care architectural profession. Together, we will improve the world by serving as the authoritative voice for the design of healthy environments, leading the way to effective future practice, and advocating with those who share our goals.

AAH is pleased to celebrate the outstanding achievements of contemporary architects and recognize the firms for their contributions to the health care environment with the 2023 Healthcare Design Awards. Each year, the awards showcase the best of health care building design and health care design-oriented research and highlight the trends of health care facilities and the future direction of design. Our panel of jurors evaluate project entries for effectively addressing conceptual strengths that address aesthetic, civic, urban, and social concerns, as well as the requisite functionality and sustainability requirements of a health care facility.

“I am always blown away by the quality of work that is produced throughout our industry every year,” says Kenneth Webb IV, AIA, president of AAH. “It is truly inspiring to see the depth of exploration and the quality of the spaces that are designed and constructed to promote health and well-being for the communities in which these award-winning projects serve. Without a doubt the level of design, rigor of research, and focus on healing environments continue to advance within our health care design industry.”

Full awards profiles are available at aia.org/aah.

AAH Board

2023 President/Governance & Collaboration

Kenneth Webb IV, AIA, ACHA, LEED BD+C

Past President/Operations & Recruitment

Ellen Taylor, PhD, AIA, MBA, EDAC

2024 President/Connections

Michelle Trott, AIA, NCARB, ACHA

Marketing & External Visibility

Kimberly Montague, AIA, EDAC, LEED AP, NCARB

Education

Roderic Walton, AIA, NCARB, NOMA

Conferences

Pierce McVey, AIA, LEED AP

Codes and Standards

Bryan Langlands, AIA, FACHA, EDAC

Recognitions

Southern Ellis, AIA, LEED AP

CATEGORY A

BROADWAY YOUTH CENTER

Chicago, Illinois | Wheeler Kearns Architects





Description

Thanks to its thoughtful design approach, Howard Brown Health's Broadway Youth Center is a welcoming and inclusive space that offers comprehensive healthcare services and social programs for LGBTQ+ young people in Chicago. Built on a tight urban site, the center is at the intersection of multiple transit lines, making it a resource for the local neighborhood while also accessible to young people throughout the wider city. Howard Brown Health (HBH) has been offering services in Chicago since 1985, and its Broadway Youth Center, founded in 2004 as a trauma-informed alternative to traditional care environments, had moved from location to location throughout Chicago's north side. As the center's lease expired, and demand for services and clinic waiting times soared, HBH turned to the design team to develop the organization's first ground-up new building.

ARCHITECT

Wheeler Kearns Architects

OWNER/CLIENT

Howard Brown Health

PHOTOGRAPHS/ILLUSTRATIONS

Kendall McCaugherty / Hall + Merrick + McCaugherty

CONSTRUCTION MANAGER

Bulley & Andrews

MEP/FP ENGINEER

dbHMS

STRUCTURAL ENGINEER

Forefront Structural Engineers

CIVIL ENGINEER

Terra Engineering, Ltd.

LANDSCAPE ARCHITECT

Site Design Group, Ltd.

ACOUSTIC CONSULTANT

Kirkegaard

CONSULTANT

Anderson Mikos Architects, Ltd.

KITCHEN CONSULTANT

Edge Associates

OWNER'S REPRESENTATIVE

RLE Partners

CONSTRUCTION COST OR ANTICIPATED CONSTRUCTION COST

\$12 million

BUILDING AREA OR ANTICIPATED BUILDING AREA

17,780 sq. ft.

CONSTRUCTION START DATE

September 2020

COMPLETION DATE

September 2021

Jury comment

"This is a great program and mission housed in a beautiful building."

CATEGORY A

FAMILY TREE CLINIC

Minneapolis, Minnesota | Perkins&Will





Description

For more than half a century, Minneapolis' Family Tree Clinic has provided underserved populations in the Twin Cities with reproductive and sexual health services. But in recent years, the clinic's clients, largely BIPOC, LGBTQ+ individuals, and those living below the poverty line, have faced long waiting lists and barriers to cutting-edge medical care. This new clinic, just 1.2 miles from downtown Minneapolis and connected to bike shares, three mass transit lines, and two major interstates, ensures its patients that they matter, are seen, and will be cared for. Its simple brick volume reflects the scale and material patterns of the surrounding environment, and the team's material choice gives the building a sense of permanence in the community. Murals created by local BIPOC and LGBTQ+ artists wrap the building and express the power of healing.

ARCHITECT

Perkins&Will

OWNER/CLIENT

Family Tree Clinic

PHOTOGRAPHS/ILLUSTRATIONS

Nathan Anderson Photography, ©Perkins&Will

INTERIOR DESIGN

Perkins&Will

MEP ENGINEER

Victus Engineering

STRUCTURAL ENGINEER

BKBM Engineers

LANDSCAPE ARCHITECT

Perkins&Will

GENERAL CONTRACTOR

Greiner Construction

OWNER'S REPRESENTATIVE

Grand Real Estate Advisors, LLC

FURNITURE DEALER

Fluid Interiors

SIGNAGE

Knock, Inc.

MURAL ARTISTS

Hibaaq Ibrahim, Moon Juice Art / Joy Spika, Tomie Topbear, City of Mischief / Maiya Hartman, Creatives After Curfew / Martzia Thometa / Leslie Barlow / Kenna Cottman / Simone Alexa

CONSTRUCTION COST OR ANTICIPATED CONSTRUCTION COST

\$4,850,000

BUILDING AREA OR ANTICIPATED BUILDING AREA

17,000 sq. ft.

CONSTRUCTION START DATE

November 2020

COMPLETION DATE

November 2021

Jury comment

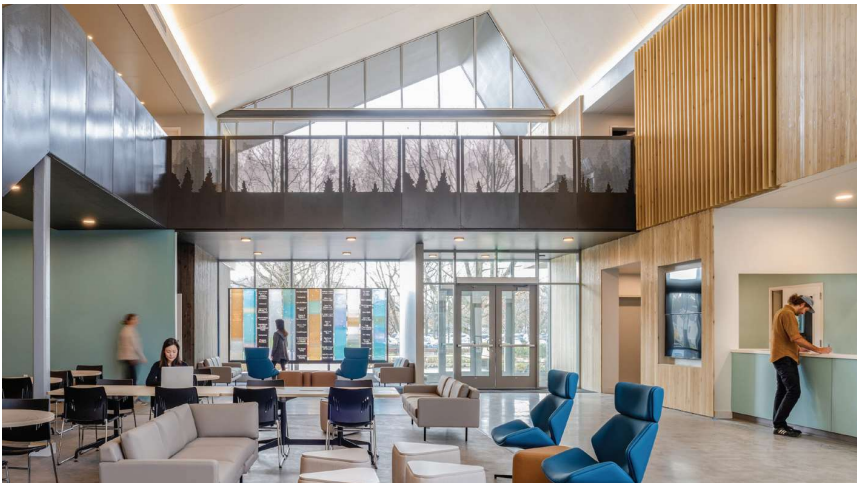
"It offers a welcoming and person-forward space that meets patients who are ready to engage in their healthcare."

CATEGORY A

FORA HEALTH

Portland, Oregon | Holst Architecture





Description

Combining trauma-informed design and community space, Fora Health's new treatment campus in Portland helps free Oregonians from addiction while tripling the organization's capacity. The new facility removes barriers to treatment by combining its administrative offices and residential and outpatient services under one roof for the first time. It serves the entire community, from low-income to private-pay patients, ensuring Fora Health's future financial health. At Fora Health, addiction is not viewed as a failure of personal willpower but rather a medical issue that requires a compassionate approach to life-saving services. Uniting its programs in one building was a critical component of the design's integrated approach.

ARCHITECT

Holst Architecture

OWNER/CLIENT

Fora Health

PHOTOGRAPHS/ILLUSTRATIONS

Christian Columbres

MEP ENGINEER

Sazan Group, Inc.

STRUCTURAL ENGINEER

Catena Consulting Engineers

CIVIL ENGINEER

Vega Civil Engineering, LLC

LANDSCAPE ARCHITECT

Ground Workshop

GENERAL CONTRACTOR

R&H Construction

CONSTRUCTION COST OR ANTICIPATED CONSTRUCTION COST

\$18,300,000

BUILDING AREA OR ANTICIPATED BUILDING AREA

53,774 sq. ft.

CONSTRUCTION START DATE

May 2020

COMPLETION DATE

November 2021

Jury comment

"The design team did a fantastic job of integrating the building into the site and nature."

CATEGORY A

OHIOHEALTH NEUROSCIENCE WELLNESS CENTER

Columbus, Ohio | Gensler





Description

Designed to uplift and inspire, the OhioHealth Neuroscience Wellness Center sits adjacent to a forested wetland on the perimeter of the health system's Riverside Methodist Hospital campus. The interdisciplinary center's programs serve people living with significant conditions like stroke, multiple sclerosis, and Parkinson's disease. Its modest architecture, unusual for such an active major medical campus, prioritizes the surrounding landscape and access to daylight. On the exterior, a mix of contextually driven materials allows the center to fit with the surrounding buildings and its forest context. Masonry and a sustainably harvested hardwood facade marry the manmade and the natural, strengthening the connection between the building and its landscape.

ARCHITECT

Gensler

OWNER/CLIENT

OhioHealth

PHOTOGRAPHS/ILLUSTRATIONS

James Steinkamp Photography

MEP ENGINEER

BR+A

STRUCTURAL ENGINEER

Rubinos & Mesia Engineers, LLC

CIVIL ENGINEER

Evans, Mechwart, Hambleton, & Tilton, Inc.

LANDSCAPE ARCHITECT

Evans, Mechwart, Hambleton, & Tilton, Inc.

GENERAL CONTRACTOR

Whiting-Turner

MEDICAL EQUIPMENT

Walsh Consulting

CONSTRUCTION COST OR ANTICIPATED CONSTRUCTION COST

\$10,322,400

BUILDING AREA OR ANTICIPATED BUILDING AREA

25,300 sq. ft.

CONSTRUCTION START DATE

September 2019

COMPLETION DATE

May 2021

Jury comment

"The building clearly addresses the needs of the clientele it's serving."

CATEGORY B

ALLEGHANY HEALTH NETWORK WEXFORD HOSPITAL

Wexford, Pennsylvania | HKS





Description

Aiming to bring healthcare closer to home, Allegheny Health Network's Wexford Hospital, located in a suburb of Pittsburgh, is a new medical campus that expands the continuum of care by supporting healthy lifestyles and offering a full spectrum of patient services. Designed with the patient at the forefront, the 160-bed hospital offers a value-based approach to design that focuses on patient experiences, efficient operations, and financial and environmental sustainability. The team organized the hospital around a choreographed sequence of connected public spaces and circulation that all reinforce connections to nature. Those connections also inform the hospital's wayfinding, beginning at the main entry that sits below a dramatic wood-clad cantilever that relies on a first-of-its-kind structural system.

ARCHITECT

HKS

ASSOCIATE ARCHITECT

IKM

OWNER/CLIENT

Dr. Allan Klapper, President AHN Wexford

PHOTOGRAPHS/ILLUSTRATIONS

Ed Massery Photography, Inc., courtesy of HKS, Inc.

MEP ENGINEER

WSP

STRUCTURAL ENGINEER

HKS, Inc.

CIVIL ENGINEER

Gateway Engineers

GENERAL CONTRACTOR

Gilbane Massaro Joint Venture

LANDSCAPE ARCHITECT

Mahan Rykiel Associates

FOOD SERVICE

Corsi Associates

LOW VOLTAGE

EDI, Ltd.

BUILDING AREA OR ANTICIPATED BUILDING AREA

345,000 sq. ft.

CONSTRUCTION START DATE

October 2018

COMPLETION DATE

June 2021

Jury comment

"Impressed by the level of stakeholder participation, which pervaded the project through the entirety of the design process."

CATEGORY B

PARKLAND MOODY OUTPATIENT CENTER

Dallas, Texas | HKS





Description

For more than 125 years, the Parkland Health and Hospital System has been Dallas' primary treatment center for the city's sickest patients, often those with no access to health insurance and living below the poverty line. When Parkland replaced its massive acute care hospital, its multiple clinics were still located in outdated facilities across the city. This project elegantly unites the 24 disparate clinics in a central building on Parkland's new campus, creating a dignified health community for all. Built on a former industrial site that was later turned into a parking lot, the clinic's massing and landscape plan, which aims to "put the park back in Parkland," emphasize wellness.

Jury comment

"The fact that it's built on a former parking lot, adjacent to public transportation, is remarkable."

ARCHITECT

HKS

ASSOCIATE ARCHITECTS

Manning Architects & VAI Architects

OWNER/CLIENT

Parkland Health & Hospital System

PHOTOGRAPHS/ILLUSTRATIONS

Darryl Shields & Tom Harris

ENGINEERING

MEP: MEP Consulting Engineers
Structural: Walter P Moore and Associates, Inc., Martinez Moore Engineers, LLC
Acoustics: Acoustonica

AUDIO/VISUAL/TELECOM/FIRE PROTECTION/SECURITY

MEP Consulting Engineers, Inc.

CIVIL ENGINEER/LANDSCAPE ARCHITECT

Pacheco Koch Consulting Engineers, LLC

ACCESSIBILITY

Access by Design

COMMISSIONING

Burns & McDonnell

CONTRACTOR

McCarthy Building Companies / The Crowther Group

ENVELOPE

Pie Consulting & Engineering

GRAPHICS/WAYFINDING

Healthcare Graphics

CONSULTING INTERIORS/ PROGRAMMING/SPECIFICATIONS

HKS, Inc.

KITCHEN

Systems Design International, Inc.

LIGHTING

Architectural Lighting Alliance

SUSTAINABILITY/ENERGY CODE

HKS Inc, Sustainable Concepts LLC

CONSTRUCTION COST OR ANTICIPATED CONSTRUCTION COST

\$154 million

BUILDING AREA OR ANTICIPATED BUILDING AREA

525,000 sq. ft.

CONSTRUCTION START DATE

May 2019

SUBSTANTIAL PROJECT COMPLETION

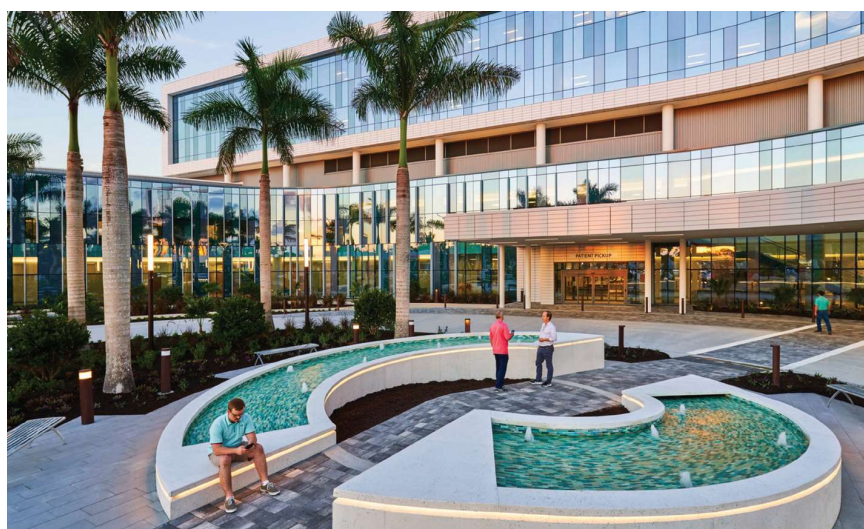
2021

CATEGORY B

SARASOTA MEMORIAL HOSPITAL- VENICE

Venice, Florida | Flad Architects





Description

Sarasota Memorial Hospital-Venice is a new source of high-quality medical services for the growing population of Venice, Florida. As the first inpatient facility off of its central campus, the new hospital bolsters Sarasota Memorial Health Care System's commitment to innovative care and is the system's most significant expansion in nearly a century. As it embarked on creating a new greenfield hospital campus, the system aimed to create a full-service hospital reflective of its existing post-war architectural style that could be easily navigated and expanded, if needed. The resulting hospital includes 110 private patient rooms, medical and surgical care rooms, an intensive care unit, and women's health services. Perhaps most important, the master plan for the facility allows it to more than triple its current size through two additional patient towers planned for the rear of the hospital, avoiding any disruption to the main entrance and patient experience.

ARCHITECT

Flad Architects

OWNER/CLIENT

Sarasota Memorial Health Care System

PHOTOGRAPHS/ILLUSTRATIONS

Edward Caruso

MEP ENGINEER

Affiliated Engineers, Inc.

STRUCTURAL ENGINEER

Flad Structural Engineers

CIVIL ENGINEER

Stantec

ACOUSTICAL

Quietly Making Noise

CONSTRUCTION MANAGER

Gilbane Building Company

FOOD SERVICE DESIGN

HMC Inc.

LIGHTING DESIGN

Pivotal Lighting Design

MEDICAL EQUIPMENT

Sarasota Memorial Hospital

**CONSTRUCTION COST OR
ANTICIPATED CONSTRUCTION COST**
\$280 million

**BUILDING AREA OR
ANTICIPATED BUILDING AREA**
452,000 sq. ft.

CONSTRUCTION START DATE
April 2018

COMPLETION DATE
November 2021

Jury comment

"There is a strong, consistent approach from beginning to end in this project."

CATEGORY B

**SEATTLE CHILDREN'S BUILDING CARE:
DIAGNOSTIC & TREATMENT FACILITY**

Seattle, Washington | ZGF Architects





Description

Despite steady growth over the years, demand for Seattle Children's services has outpaced its capabilities. This project, which hinges on a more than 20-year relationship between the design team and health system, expands the hospital by 485,500 square feet to ensure the region's children receive the quality care they deserve, including life-saving treatments and surgeries. Seattle Children's was founded more than a century ago by a group of philanthropists to care for children regardless of their backgrounds or their family's ability to pay. That legacy of giving is reflected in this project, which aimed to modernize and expand access to critical diagnostic and treatment services for the region's sickest children. Hundreds of hospital employees, families, and community members joined the design team for 55 immersive planning and design workshops in pursuit of a high-performing and patient-centered model of care.

ARCHITECT

ZGF Architects

OWNER/CLIENT

Seattle Children's Hospital

PHOTOGRAPHS/ILLUSTRATIONS

Benjamin Benschneider

MECHANICAL/PLUMBING ENGINEER

Affiliated Engineers, Inc.

STRUCTURAL ENGINEER

Coughlin Porter Lundeen

CIVIL ENGINEER

Coughlin Porter Lundeen

ELECTRICAL ENGINEER

Stantec

LANDSCAPE ARCHITECT

Site Workshop

BUILDING ENCLOSURE

RDH Building Science

GENERAL CONTRACTOR

Sellen Construction

FIRE PROTECTION

McKinstry

SUSTAINABILITY CONSULTANT

Affiliated Engineers, Inc.

WAYFINDING/ENVIRONMENTAL

Graphics

Studio SC

CONSTRUCTION COST OR ANTICIPATED CONSTRUCTION COST

\$344 million

BUILDING AREA OR ANTICIPATED BUILDING AREA

485,500 sq. ft.

CONSTRUCTION START DATE

June 2018

COMPLETION DATE

June 2022

Jury comment

"The exterior of the building is memorable, and you will certainly not forget what you see."

CATEGORY B

VA WORCESTER COMMUNITY-BASED OUTPATIENT CLINIC

Worcester, Massachusetts | Smithgroup





Description

Born from a design-build partnership between architect and contractor, this four-story medical office building is among the newest additions to the University of Massachusetts Chan Medical School Campus. Its design approach is twofold, honoring the service and sacrifice of the nation's veterans and fitting seamlessly into the campus' larger context. The design process incorporated the Department of Veterans Affairs Community-Based Outpatient Clinic model, a nationwide effort to reduce barriers veterans often face in seeking care and expand the department's capacity to provide quality outpatient primary care. An awareness of veterans' combat experience informed the clinic's design and layout.

ARCHITECT

SmithGroup

OWNER/CLIENT

University of Massachusetts Chan Medical School

PHOTOGRAPHS/ILLUSTRATIONS

Anton Grassl Photography

MEP ENGINEER

SmithGroup

STRUCTURAL ENGINEER

Simpson Gumpertz & Heger

CIVIL ENGINEER

Vanasse Hangen Brustlin (VHB)

GENERAL CONTRACTOR

Suffolk Construction

ACOUSTICAL CONSULTANT

Acentech

DATA CONSULTANT

Vantage Technology Consulting Group

CONSTRUCTION COST OR ANTICIPATED CONSTRUCTION COST

\$71 million

BUILDING AREA OR ANTICIPATED BUILDING AREA

117,600 sq. ft.

CONSTRUCTION START DATE

April 2020

COMPLETION DATE

October 2021

Jury comment

"In its modest way, the clinic enhances the overall campus, demonstrating the team's careful consideration from a campus-planning standpoint."

CATEGORY C

PENN STATE HEALTH MILTON S. HERSHEY MEDICAL CENTER CHILDREN'S HOSPITAL VERTICAL EXPANSION

Hershey, Pennsylvania | Payette





Description

This project is the final piece of Penn State Children's Hospital's Clinical Quadrangle Master Plan, which charted the medical center's largest expansion since its original construction in the early 1960s by adding more than 500,000 square feet of new construction. The vertical expansion crowns the hospital with three new floors that bolster its ability to provide pediatric inpatient care, completing a strategy envisioned by the team during the design and construction of the hospital in 2012. An overarching goal was to create an integrated facility by consolidating related programs that were previously dispersed throughout the campus. The expansion has collocated the labor and delivery section of Penn State's women's health program with its well-baby nursery and the neonatal intensive care unit. Centralizing these critical areas of care has allowed the medical center to improve and expand services for new mothers and babies, including critically ill infants.

ARCHITECT

Payette

OWNER/CLIENT

Penn State Health

PHOTOGRAPHS/ILLUSTRATIONS

Warren Jagger Photography & Robert Benson Photography

MEP ENGINEER

Bard, Rao + Athanas Consulting Engineers

CIVIL ENGINEER

Gannett Fleming

STRUCTURAL ENGINEER

Gannett Fleming

GENERAL CONTRACTOR

Whiting Turner Contracting Co.

ACOUSTIC CONSULTANT

Cavanaugh Tocci Associates

WIND CONSULTANT

RWDI

CONSTRUCTION COST OR ANTICIPATED CONSTRUCTION COST

\$90 million

BUILDING AREA OR ANTICIPATED BUILDING AREA

147,560 GSF

CONSTRUCTION START DATE

April 2018

SUBSTANTIAL PROJECT COMPLETION

2021

Jury comment

"It's remarkable that the team was able to accomplish this project in an accelerated time frame with no excessive costs."

Award call for entries

The AIA Academy of Architecture for Health annually showcases the best of health care building design and design-oriented research through the Healthcare Design Awards.

Submissions open January 2024.

aia.org/aahawards

