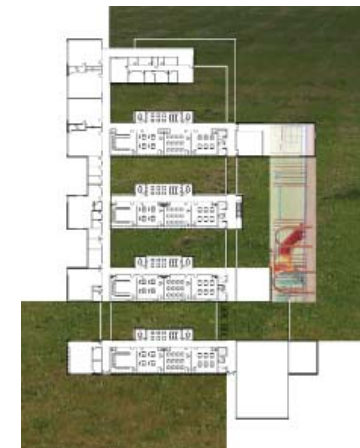
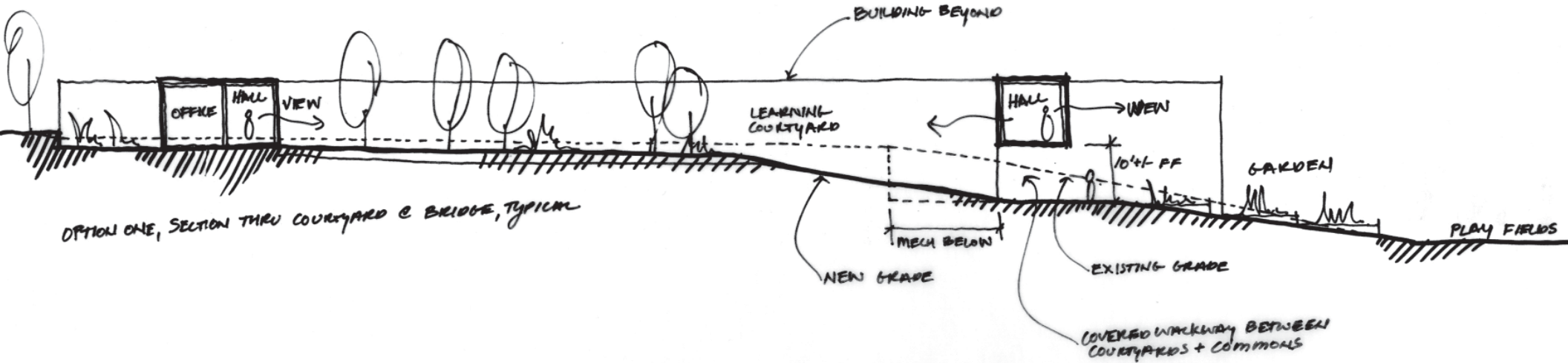


The design solution forms a series of learning bars interwoven with exterior learning courtyards across the sloped site. Rather than build tall on the upper terrace, the school is carved into the hillside and nestled at the base of the forest backdrop.



SITE PLAN

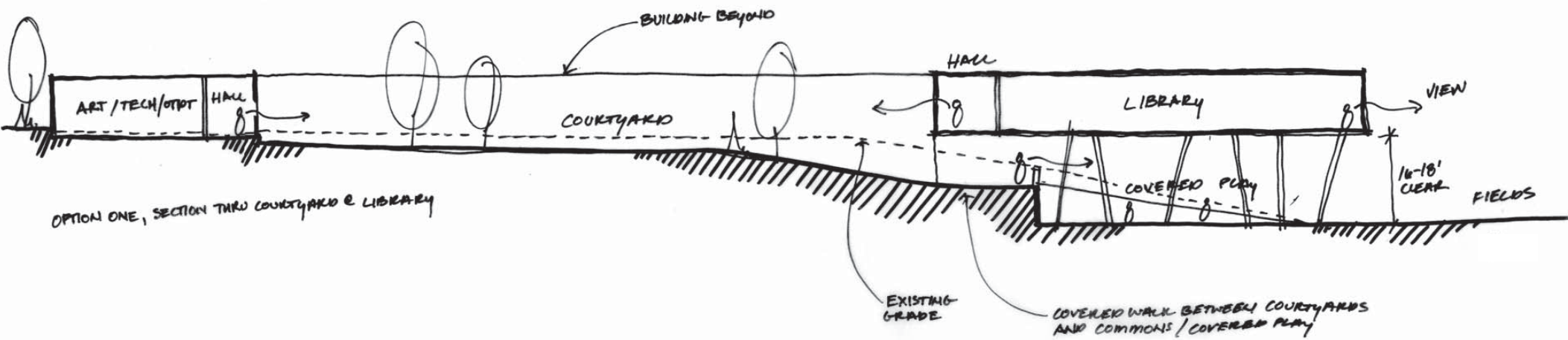
1. Bus Loop
2. Parking
3. Entry Plaza
4. Field
5. Garden
6. Service Road
7. Wetland Buffer
8. Service Area
9. Fire Lane
10. Pre-K - K Play Area
11. Play Area
12. Administration
13. Pre-K - Kindergarten Classrooms
14. Classrooms
15. Special Education
16. Art
17. Library
18. Music
19. Commons
20. Gym





Music, the commons, and the gym are located on a lower level, on grade with the open play areas and field. These three core elements are co-located and designed to be an expanding venue for performance; now the largest on the island.



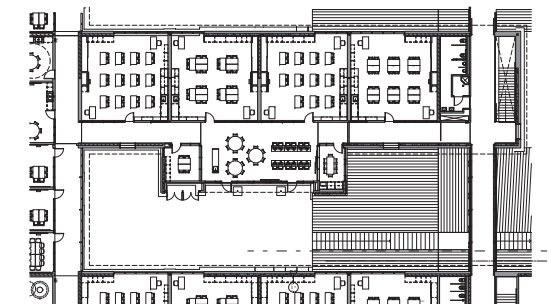
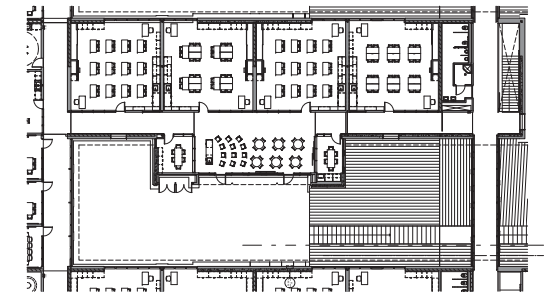
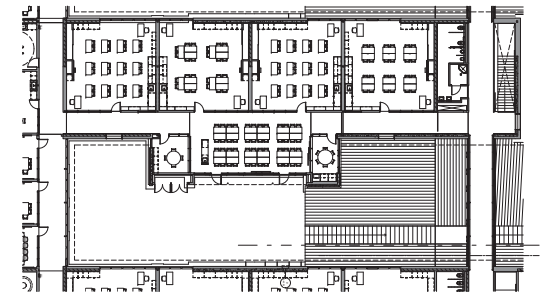






- | | |
|--|--|
| Administration | Gym (below) |
| Classroom | Cafeteria / Commons (below) |
| Special Education | Circulation |
| Library/Art | Special Education |
| Music (below) | |





The school is subdivided into four small learning clusters, Each cluster is developed around an educational courtyard and flexible learning spaces that allow for a variety of scales of interaction between students, educators, and their environment.









Computer, by an
illustrator
whole

chronicles
learning
worlds
whales

world book
anything they
personal book

book for
youth





