

# AIA 2012

NATIONAL CONVENTION  
AND DESIGN EXPOSITION

MAY 17-19

WALTER E. WASHINGTON  
CONVENTION CENTER  
WASHINGTON, D.C.

DESIGN  
CONNECTS

Serving Our Neighbors:

## Deanwood Community Center and Stoddert Elementary School in Washington, D.C.

PA001

Wednesday May 16, 2012

9:15 to 10:15 AM



THE AMERICAN  
INSTITUTE  
OF ARCHITECTS

**AIA 2012**

NATIONAL CONVENTION  
AND DESIGN EXPOSITION

MAY 17-19

WALTER E. WASHINGTON  
CONVENTION CENTER  
WASHINGTON, D.C.



THE AMERICAN  
INSTITUTE  
OF ARCHITECTS

DESIGN  
CONNECTS

This presentation is protected by US and International Copyright laws. Reproduction, distribution, display and use of the presentation without written permission of the speaker is prohibited.



**AIA 2012**

NATIONAL CONVENTION  
AND DESIGN EXPOSITION

MAY 17-19

WALTER E. WASHINGTON  
CONVENTION CENTER  
WASHINGTON, D.C.



THE AMERICAN  
INSTITUTE  
OF ARCHITECTS

DESIGN  
CONNECTS

## AIA/CES Quality Statement

This program is registered with the AIA/CES for continuing professional education. As such, it does not include content that may be deemed or construed to constitute approval, sponsorship or endorsement by the AIA of any method, product, service, enterprise or organization. The statements expressed by speakers, panelists, and other participants reflect their own views and do not necessarily reflect the views or positions of The American Institute of Architects or of AIA components, or those of their respective officers, directors, members, employees, or other organizations, groups or individuals associated with them. Questions related to specific products, publications, and services may be addressed at the conclusion of this presentation.



## LEARNING OBJECTIVES

1. Identify the possibilities of joint-use public facilities and how to program them for community use;
2. Discover how the tradition of local public architecture in Washington, D.C., informs a contemporary approach;
3. Explore greater insight into the design of community-based facilities, from site considerations to sustainable design features;
4. Recognize how the careful analysis, design, and location of non-program "places" in a public building can give identity and opportunities for interaction and community building both within and outside the building.



**AIA 2012**

NATIONAL CONVENTION  
AND DESIGN EXPOSITION

MAY 17-19

WALTER E. WASHINGTON  
CONVENTION CENTER  
WASHINGTON, D.C.



THE AMERICAN  
INSTITUTE  
OF ARCHITECTS

DESIGN  
CONNECTS

# Speaker Contact Information

**Matthew J. Bell, AIA- Principal**

EE&K- a Perkins Eastman Company

2121 Ward Court NW

Washington, DC 20037

[m.bell@perkinseastman.com](mailto:m.bell@perkinseastman.com)

**AIA 2012**

NATIONAL CONVENTION  
AND DESIGN EXPOSITION

MAY 17-19

WALTER E. WASHINGTON  
CONVENTION CENTER  
WASHINGTON, D.C.



THE AMERICAN  
INSTITUTE  
OF ARCHITECTS

DESIGN  
CONNECTS

# Speaker Contact Information

**Isaac Williams**

School of Architecture, Planning and  
Preservation

Univ. of Maryland

College Park, MD 20742

[isaac@umd.edu](mailto:isaac@umd.edu)



## Two Washington DC's.....



The Wilson Building  
(DC)



The Federal Triangle  
(US Government)

## PA200: Serving Our Neighbors



Eastern High School  
(DC)



Georgetown Public Library  
(DC)





**Deanwood Community Center**



**Stoddert Elementary School**



**Dunbar High School**

**PA200: Serving Our Neighbors:**

**Deanwood Community Center**

Stoddert Elementary School

Dunbar High School

**in Washington, D.C.**

---

---





---

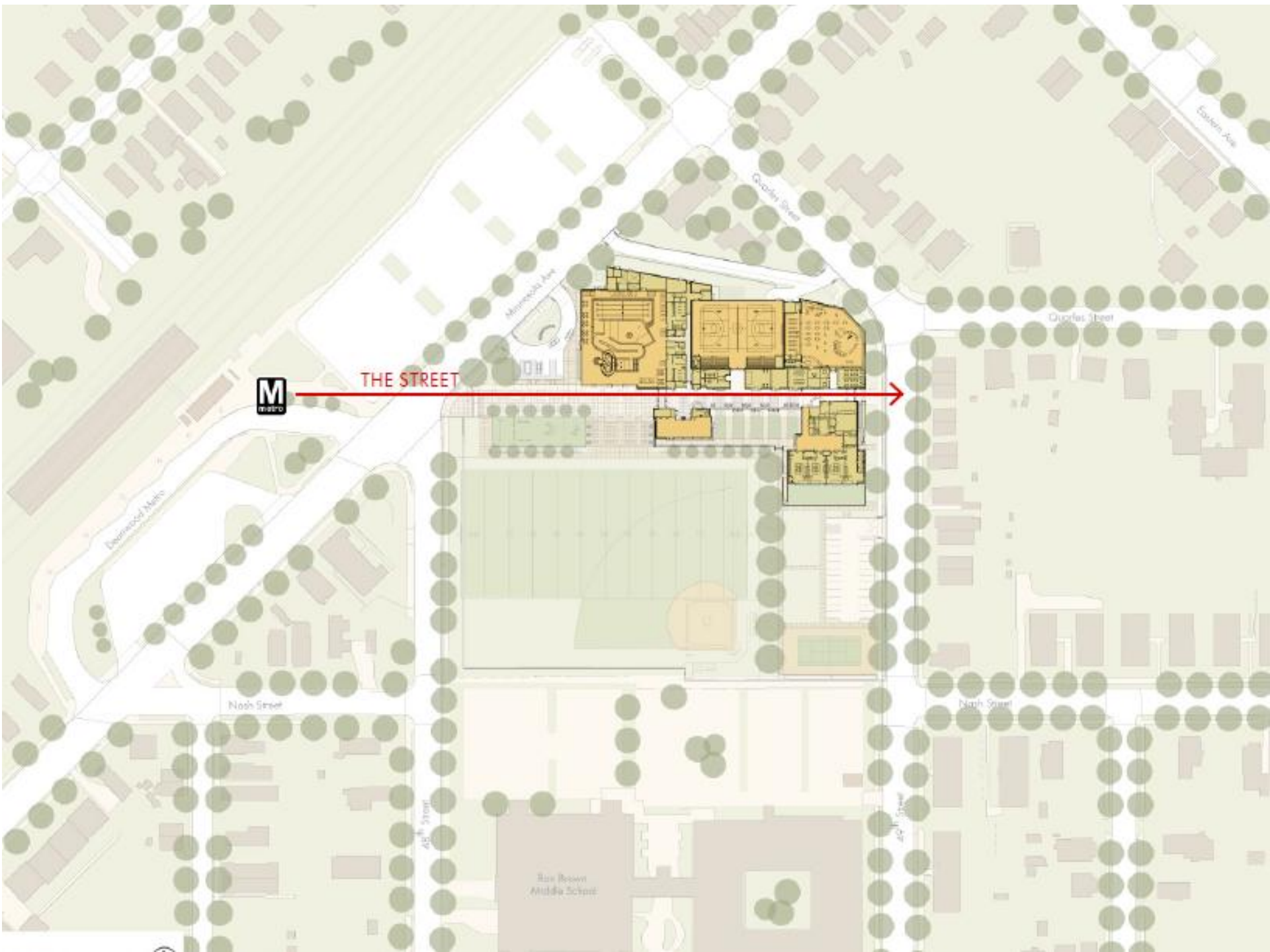
Deanwood Community Center

---





Deanwood Community Center



THE STREET



Minnesota Ave

Worley Street

Quincy Street

Eastern Ave

Deerwood Metro

Nash Street

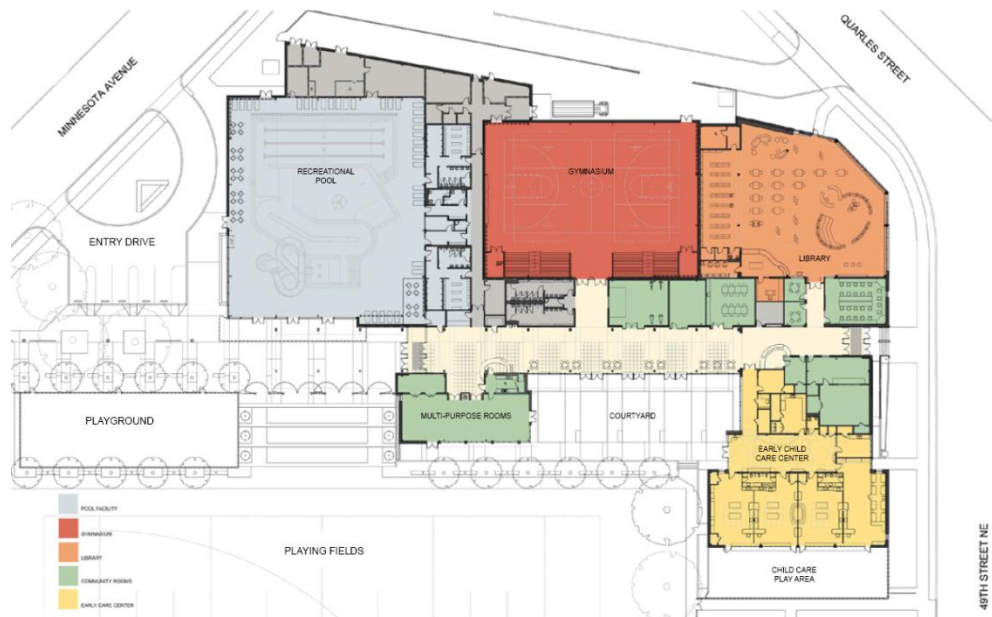
Nash Street

48th Street

49th Street

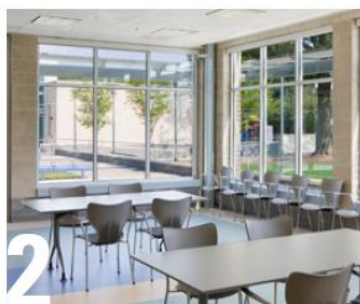
Rae Brown Middle School





## RECREATIONAL POOLS

The indoor recreational pool has become one of the most popular places in the community.



## MULTIPURPOSE ROOMS

Designed to provide the space and stage for the everyday and the special occasion - from the community meeting to a birthday party. The adjacent full service kitchen supports catered events and provides a coffee bar during the week.



## GYMNASIUM

Provides much needed place for practice and competition sports in a light filled space with great views of the trees and the sky.



## PUBLIC LIBRARY

Integrated into the design, the library entices youth who may visit the center for other programs to access the books, media, and technology it provides.



## EARLY CHILDHOOD CENTER

Early childhood education and care provides a head start for children in the community, and much needed support for young families. Accessible from the Street, parents and grandparents can mingle with neighbors after dropping off children.



Deanwood Community Center- The Street





Deanwood Community Center











The Library-Deanwood Community Center





Deanwood Community Center

**PA200: Serving Our Neighbors:**

**Deanwood Community Center**

**Stoddert Elementary School**

**Dunbar High School**

**in Washington, D.C.**

---

---



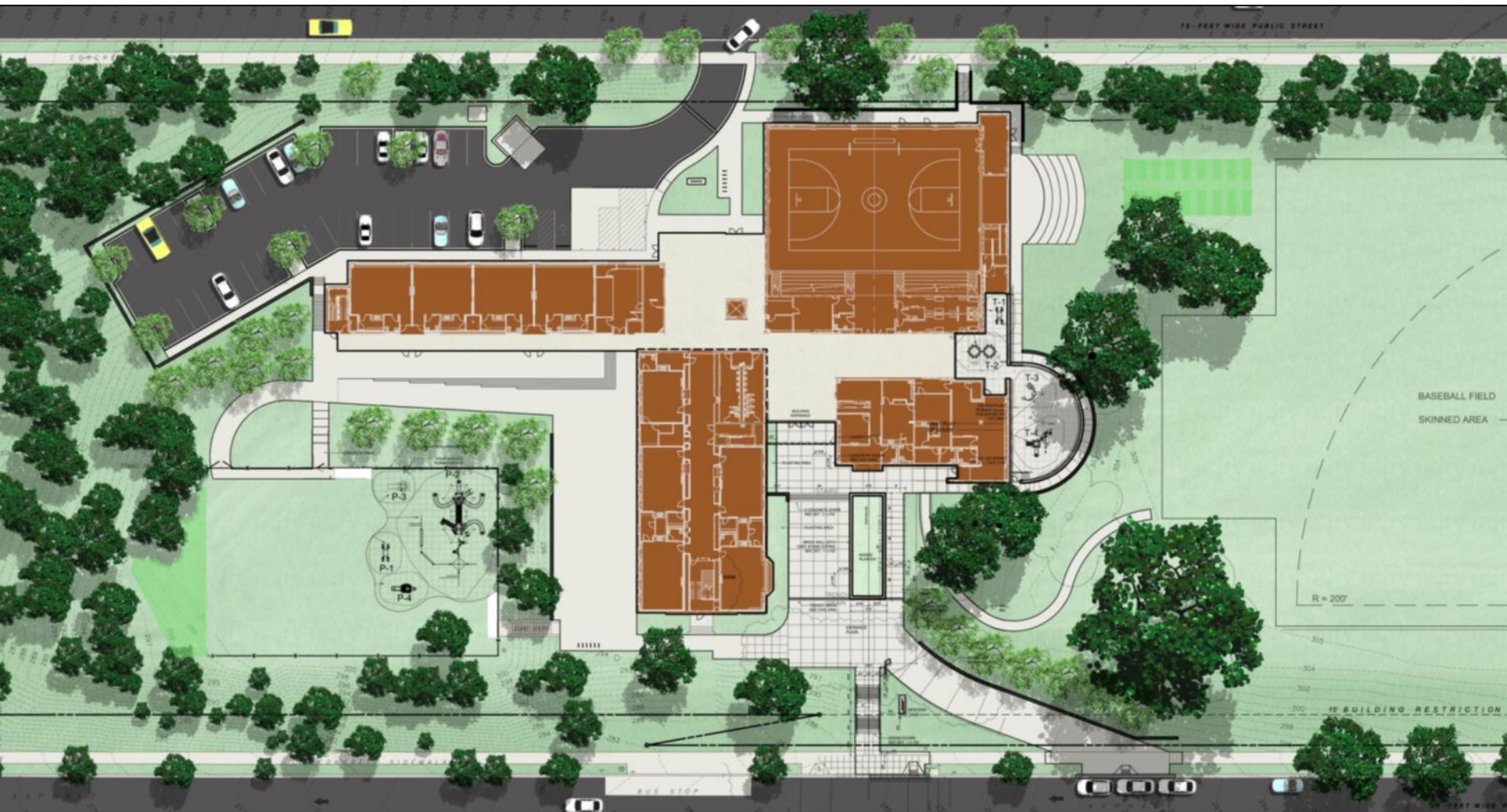


Stoddert Elementary School-Washington, DC









Stoddert Elementary School    Master Plan





Stoddert Elementary School    Entry



Stoddert Elementary School    The Heart of the School





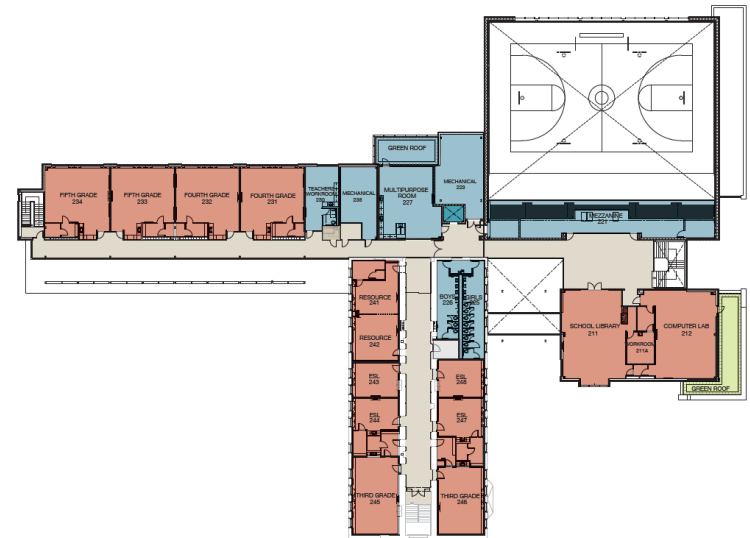
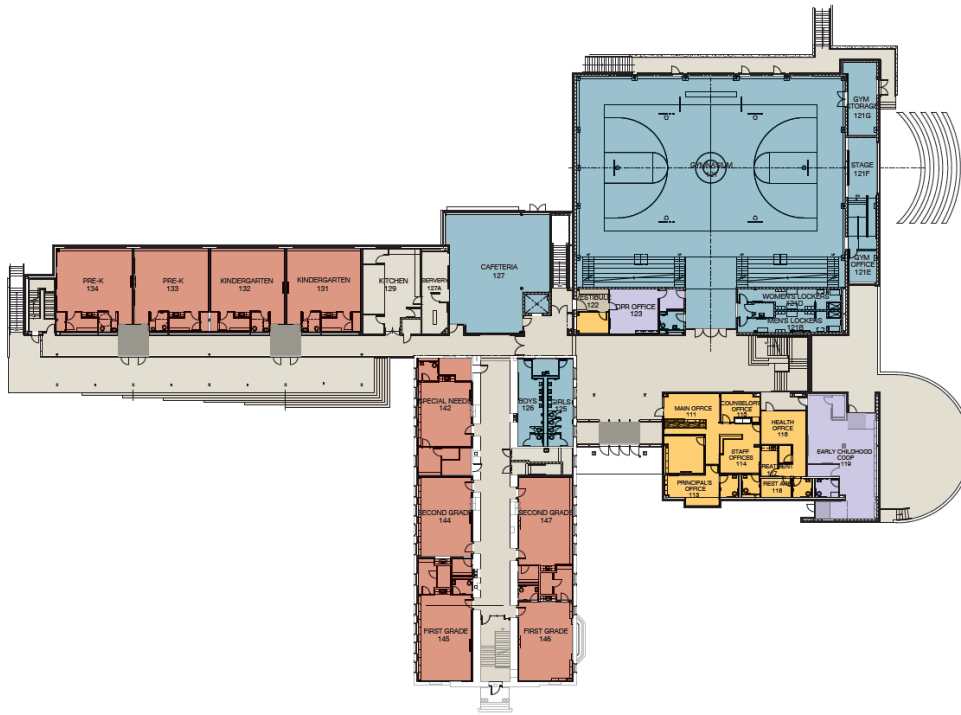
Stoddert Elementary School    Transparency and Security



Stoddert Elementary School    Transparency and Security









**SCHOOL**

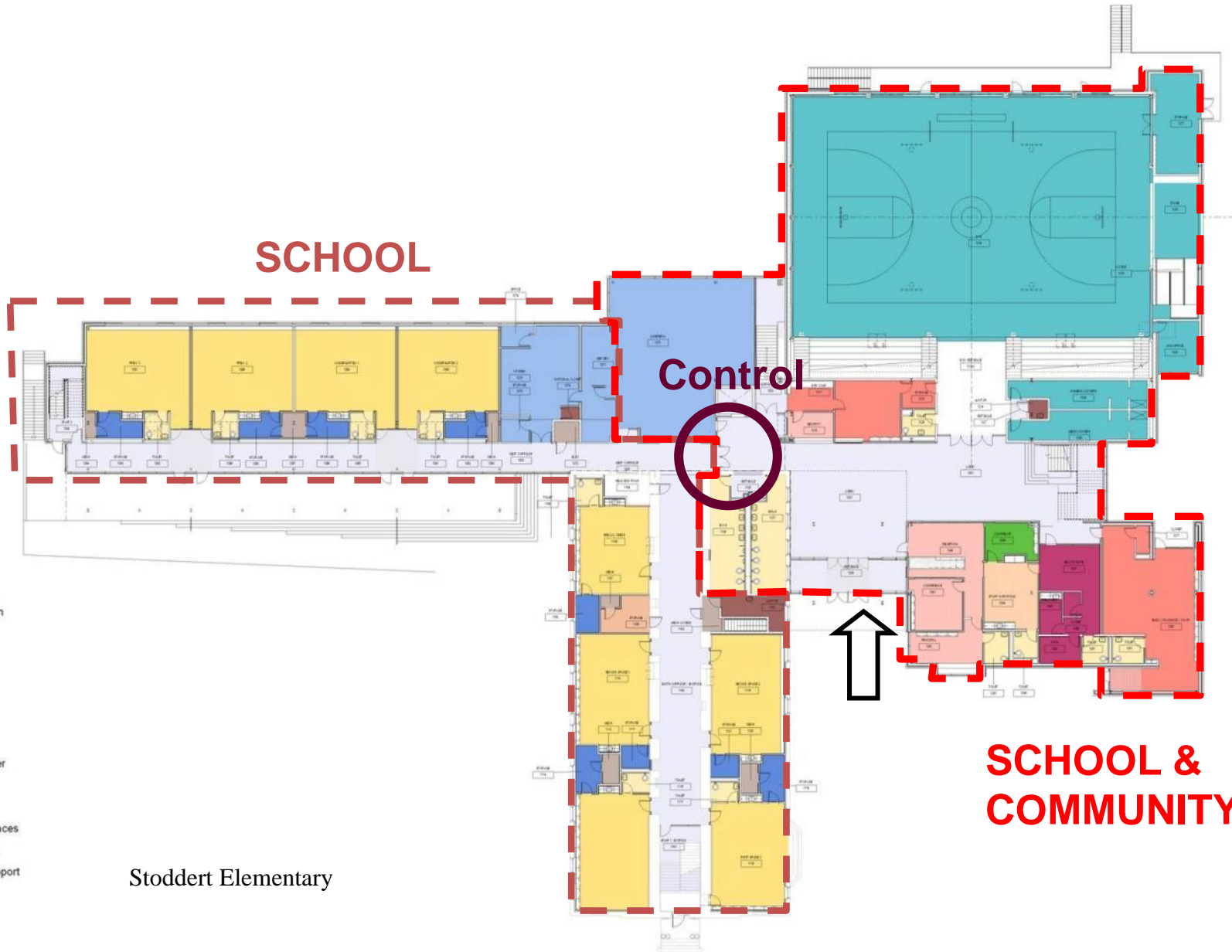
**Control**

**SCHOOL &  
COMMUNITY**

Stoddert Elementary

Joint Use/A Center of Community

- School Administration
- DPR Administration
- Guidance Suite
- Health Suite
- Academic
- Physical Education
- Arts
- Library / Media Center
- Computer Lab
- Food Service
- Teacher Support Spaces
- Instructional Support
- General Building Support
- Custodial Support
- Mechanical
- Toilet
- Circulation





---

Stoddert Elementary School-Connecting to the Site

---





Stoddert Elementary School-Glazing & Civic Presence

Photo: Joseph Romeo



---

Display, Color & Informal Gathering

---





Stoddert Elementary School-Integrating Sustainable Design



Stoddert Elementary- Other Resources in the Community Center Media Center





# Integrating Building Systems Data into Classroom Activity

## CURRENT USE



## EQUIVALENCIES

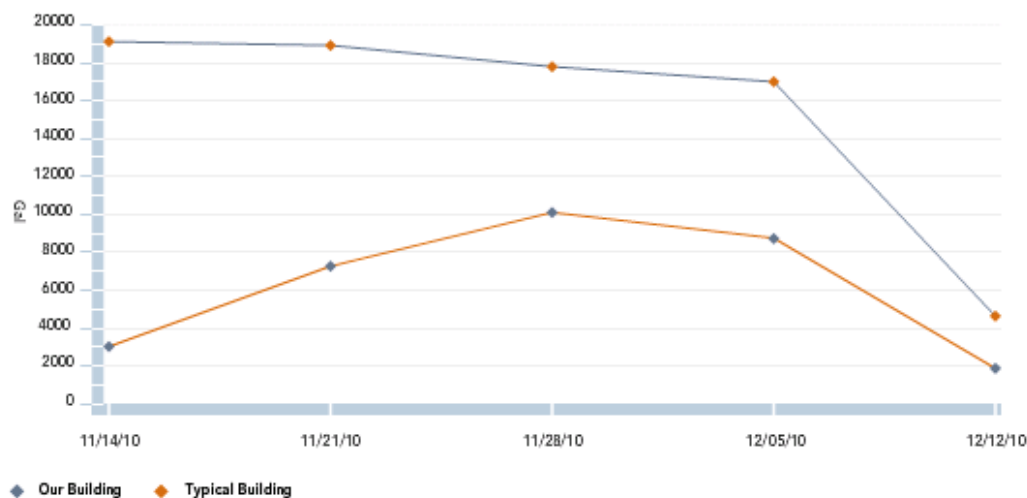


Last month we saved enough water to flush 40048.4 standard toilets.

## HISTORICAL USAGE: WATER

[Electricity](#)
[Water](#)
[CO2](#)

Buildings consume more than 2/3rds of all electricity produced in the United States annually. Improving the energy performance of buildings lowers operational costs, reduces pollution generated by power plants, and enhances comfort.



Year Month Day

[Explore](#)




## Geothermal Heating/Cooling System

### Directions:

Walk from the parking lot around the building going past the amphitheater place where you can see the field.

### **Don't forget to mention!**

- ✓ Geothermal is used to heat/cool the whole school through temp. of earth
- ✓ Stoddert's has 72 wells, 482 feet deep
- ✓ Geothermal is great because it doesn't give off CO<sub>2</sub>, there is little danger of chemical leaks, they don't use fossil fuels and are energy efficient

.....  
**Fact:** We now use 31% less energy than we used to!





**PA200: Serving Our Neighbors:**

**Deanwood Community Center**  
**Stoddert Elementary School**  
**Dunbar High School**

**in Washington, D.C.**

---

---



Dunbar High School-Building On Tradition





---

Dunbar High School-Original 1917 building

---



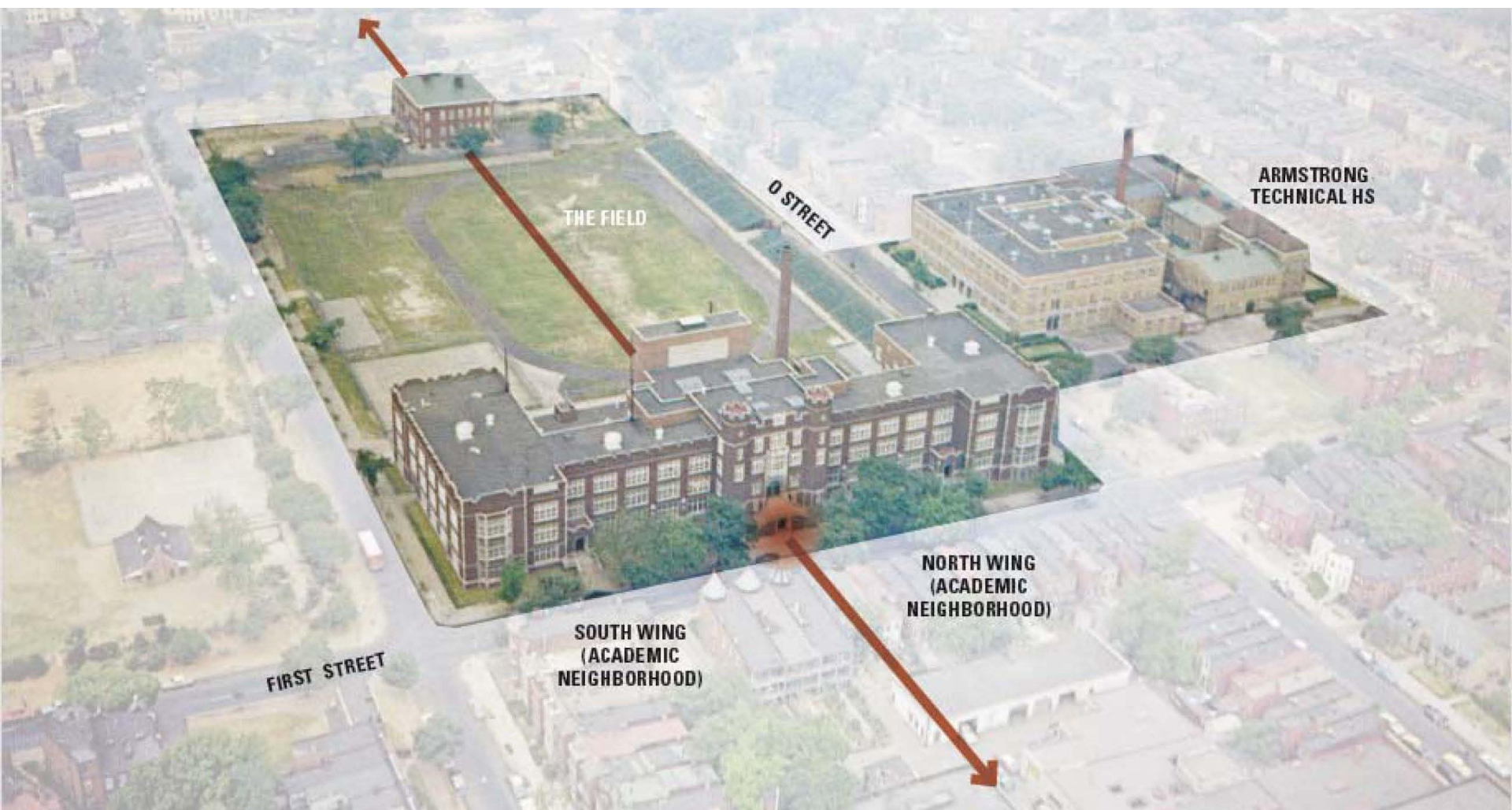


---

Dunbar High School-Original 1917 building

---



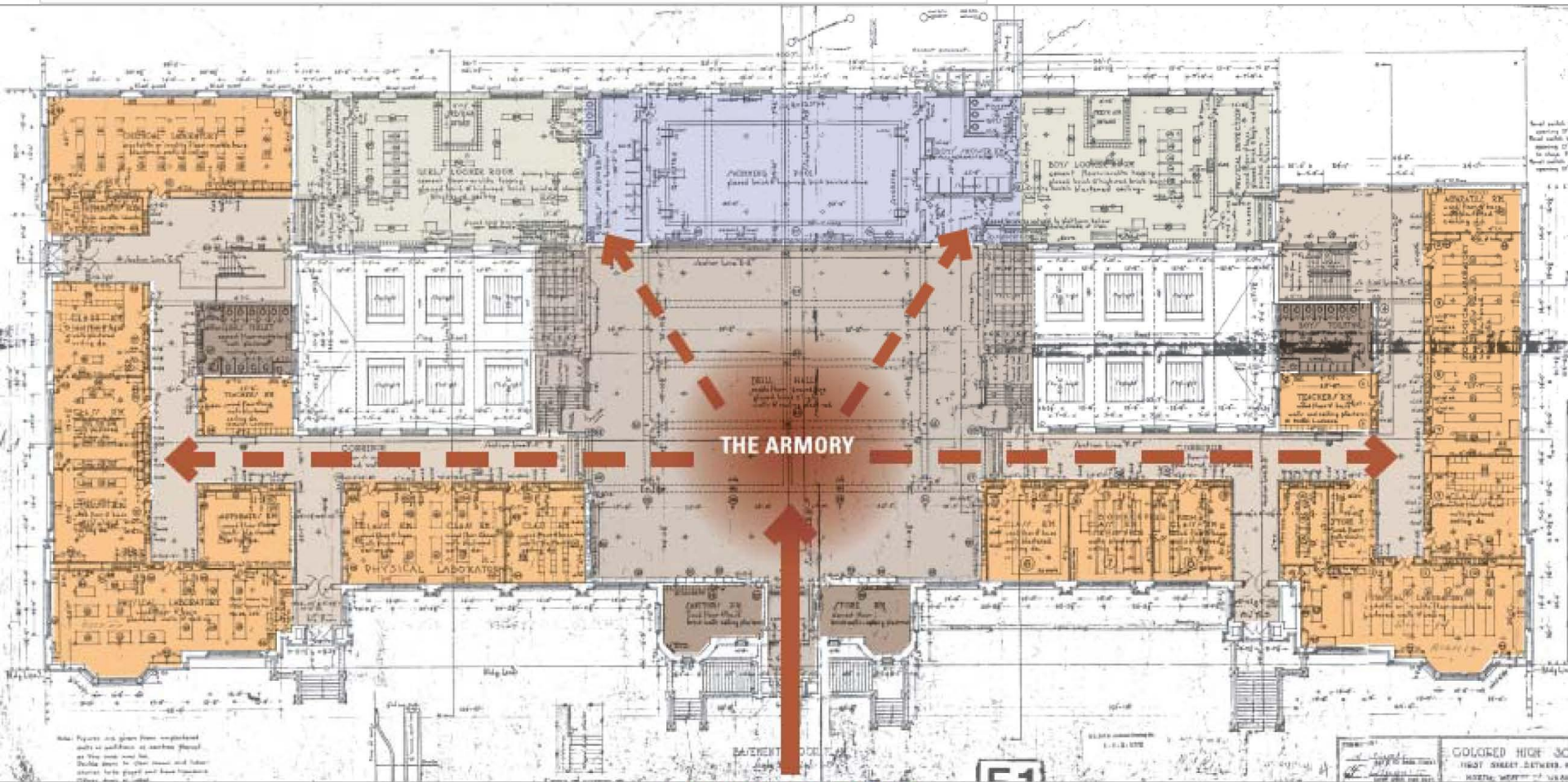


Dunbar High School-Original 1917 building



KEY

AUDITORIUM & ARTS	CLASSROOMS + LABS	GYMNASIUM + PE	ARMORY + DINING
CIRCULATION	ADMIN + MEDIA CENTER	NATATORIUM	STORAGE + RESTROOMS



ENTRY FROM FIRST STREET

THE HISTORIC ARMORY - CENTER OF THE SCHOOL

DUNBAR SENIOR HIGH SCHOOL  
CONCEPT DESIGNE&K ARCHITECTS + ENGINEERS  
MOODY NOLAN ARCHITECTS

Scale

DWG No./Title

GOLGRED HIGH SCHOOL  
1967 STREET BETWEEN  
NORTH, WEST, AND SOUTH





This was an era of school architecture where campuses respected the city. These campuses – from the classroom to the field – were designed to ensure the education of the whole person: intellectually, socially, and physically.

Inspired by this history and tradition, our concept will provide an extraordinary setting for the renewal of Dunbar High School in the 21st Century.

DUNBAR HIGH SCHOOL , CIRCA 1920

DUNBAR SENIOR HIGH SCHOOL  
CONCEPT DESIGN

EE&K ARCHITECTS + ENGINEERS  
MOODY NOLAN ARCHITECTS

Scale

DWG No./Title

Dunbar High School-Original 1917 building





"It was sort of a hang out... then of course, the students on their break from classes would stop there and talk a little bit before their next class would begin... so it was sort of an avenue of sorts with a lot of things going on"

-Dr. Ralph Green, '52

## THE HISTORIC ARMORY - CENTER OF THE SCHOOL

DUNBAR SENIOR HIGH SCHOOL  
CONCEPT DESIGN

EE&K ARCHITECTS + ENGINEERS  
MOODY NOLAN ARCHITECTS

Scale

DWG No./Title





The edifice that was the 1917 Dunbar High School Building was truly civic architecture. The building, with its grand stair, towers and clock, represented the values and dreams of the students, their families and the larger community, their aspirations for notable and lasting achievement. Inside, the building supported a modern and intensive curriculum for the time and the learning community was rooted in two distinct classroom wings centered upon the Armory, the physical and symbolic "heart" of the school.

Like Paul Laurence Dunbar, many of those who studied in this building, became people of great distinction and accomplishment. From the first African-American federal judge and the first African-American member of a President's Cabinet to our current Congresswoman and our City Council President, the list of alumni reads like a "who's who." Looking back at the design of the 1917 building that fostered such success, it is easy to identify attributes that remain relevant to the design of great learning environments nearly one hundred years later. That building provided:

- > A public place at the entry so notable that it became the setting for yearbook photos;
- > The Armory that served as the physical and social "heart of the school";
- > Distinct classroom "neighborhoods" within the larger school;
- > Pervasive natural light and ventilation through huge windows;
- > Technology-rich learning environments;
- > A campus setting that engages the Armstrong school, the track/field and the community.



## DUNBAR HIGH SCHOOL , TRADITIONS OF EXCELLENCE



Nannie Helen Burroughs



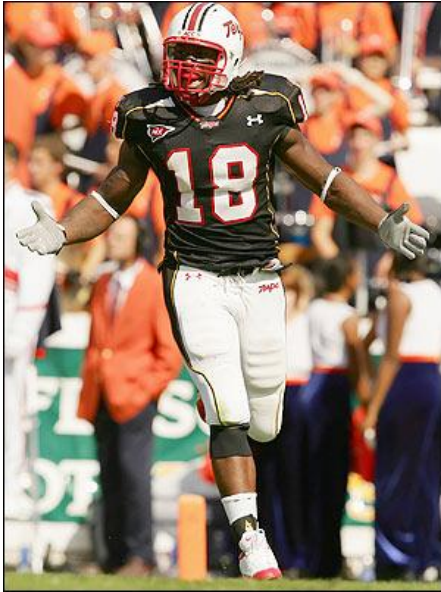
Carter G. Woodson





Sen. Edward Brooke  
Rep. Eleanor Holmes Norton





Vernon Davis  
Joshua Cribbs

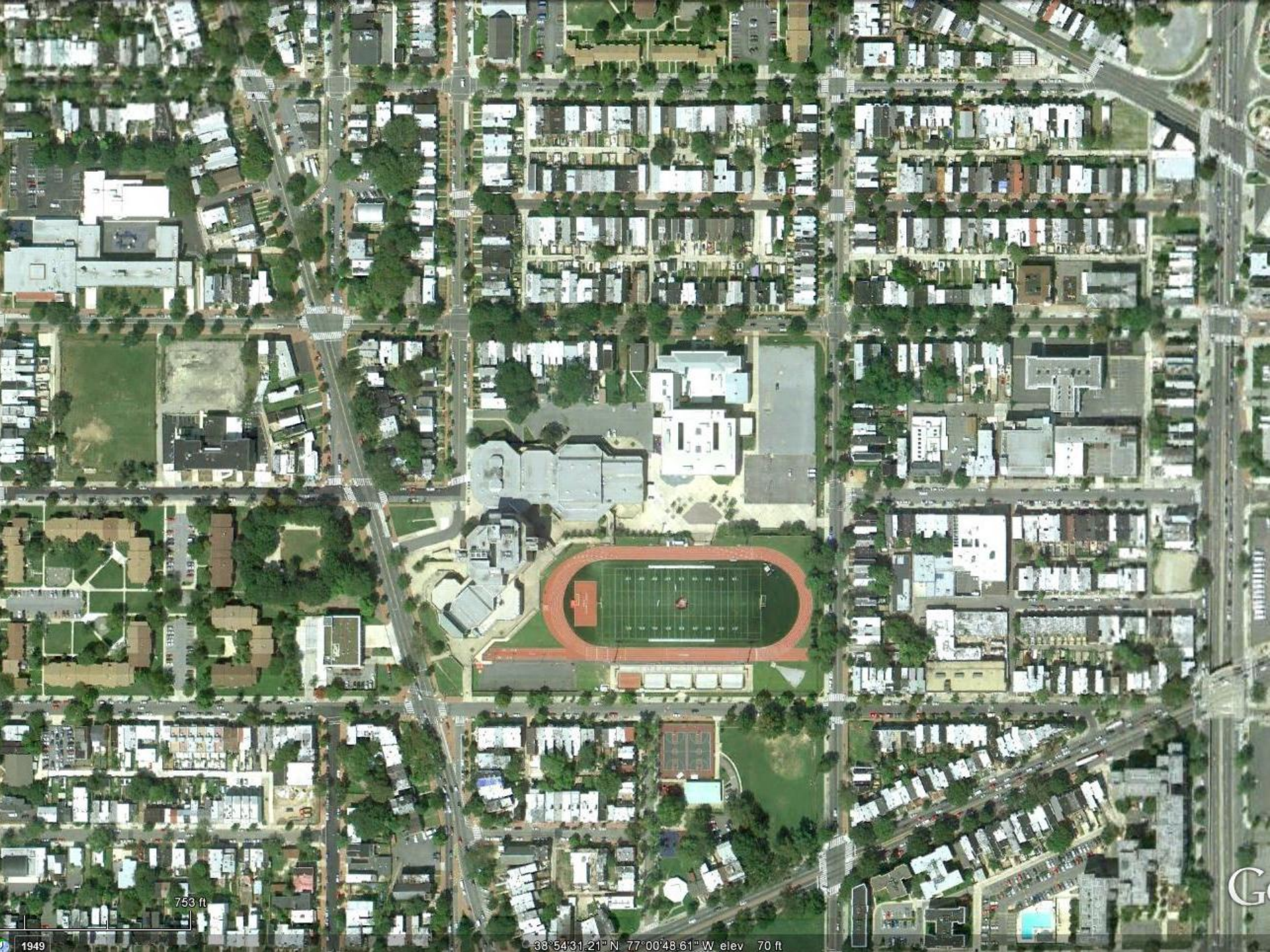






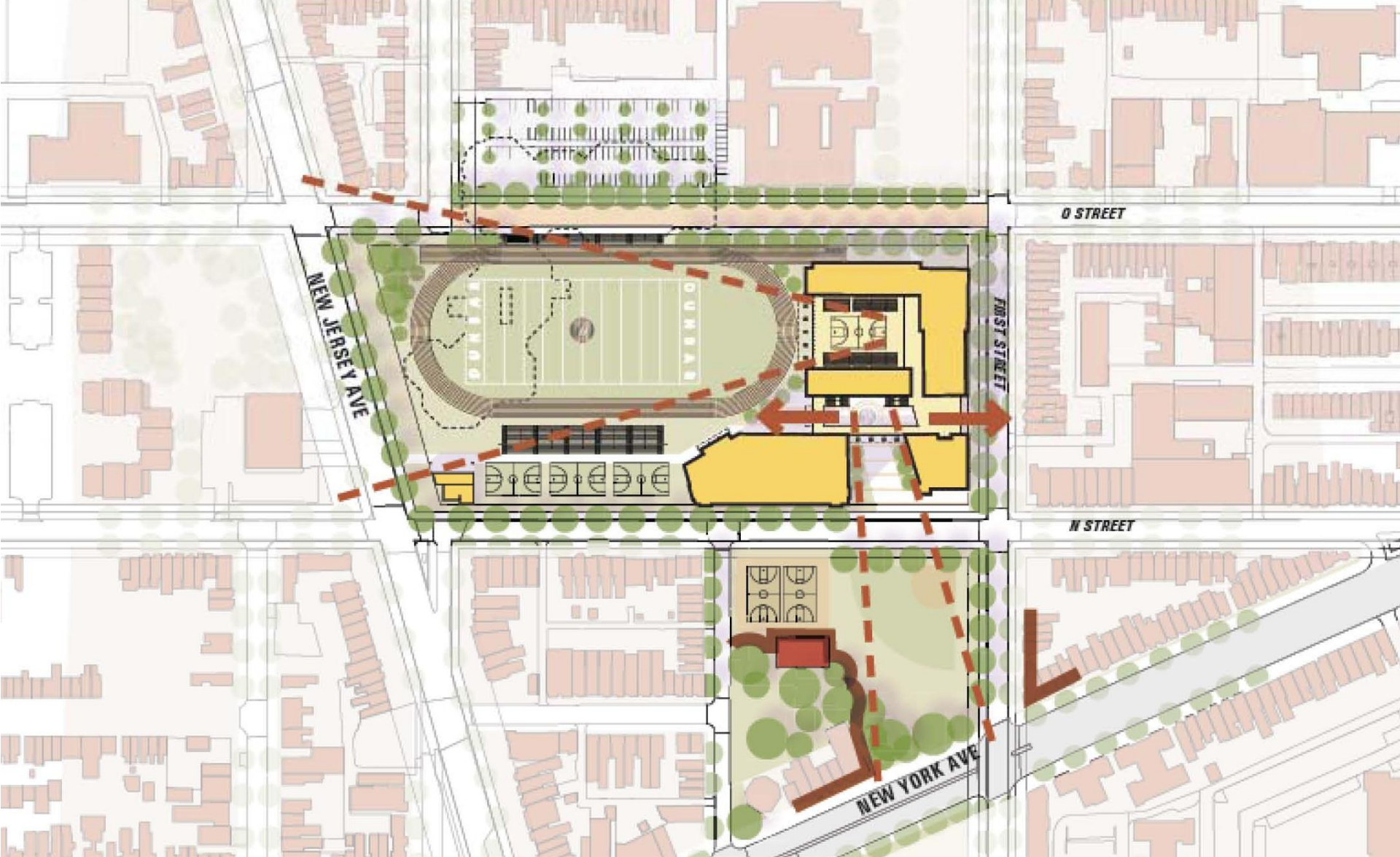
Dunbar High School 1977



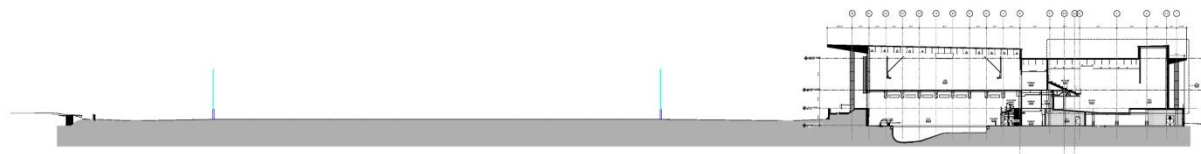
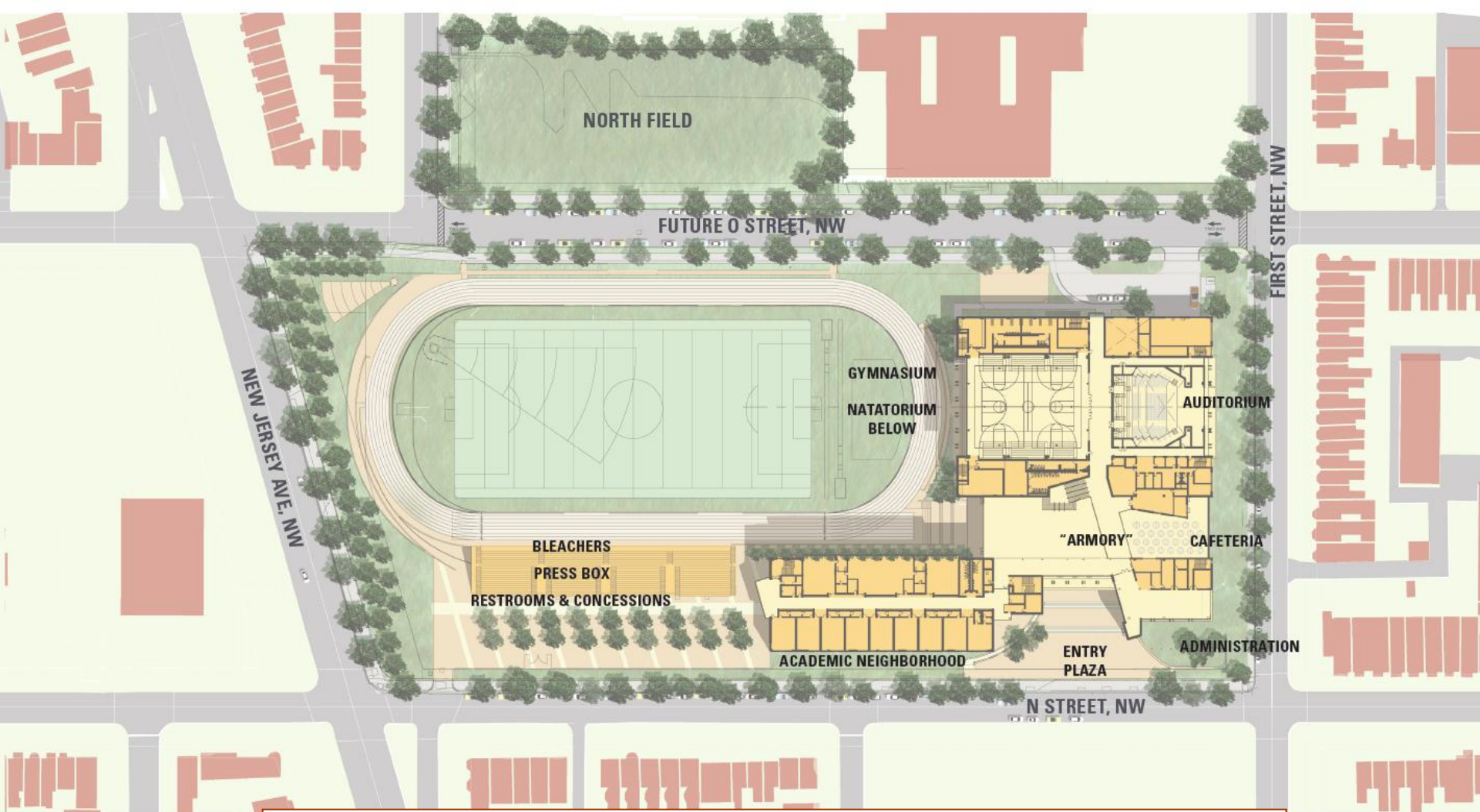


753 ft

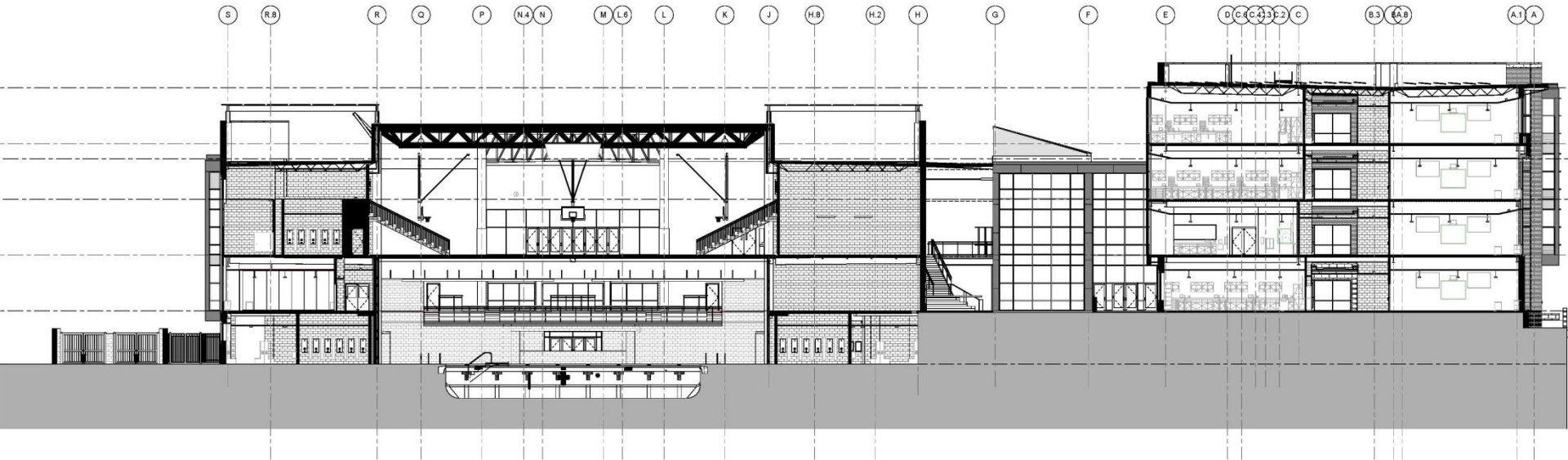
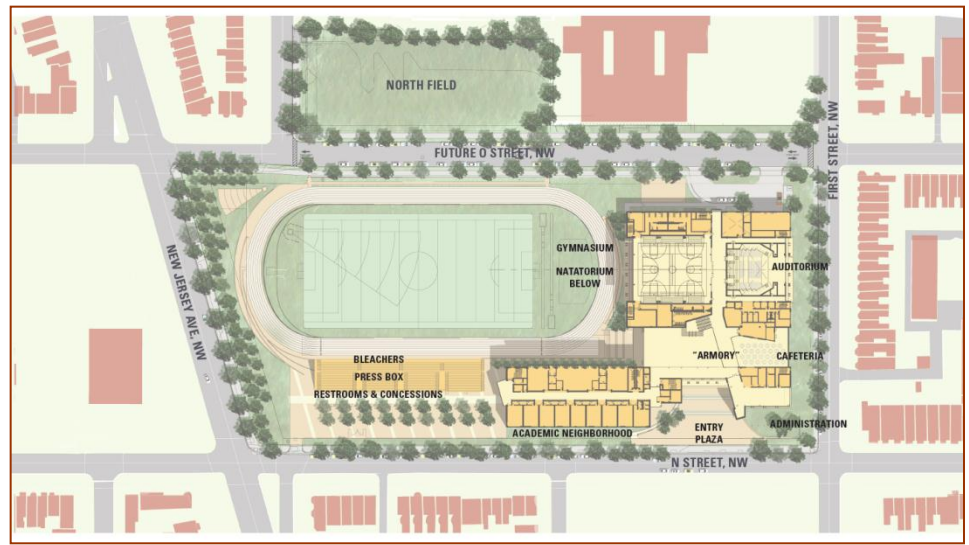




Dunbar High Site plan diagram







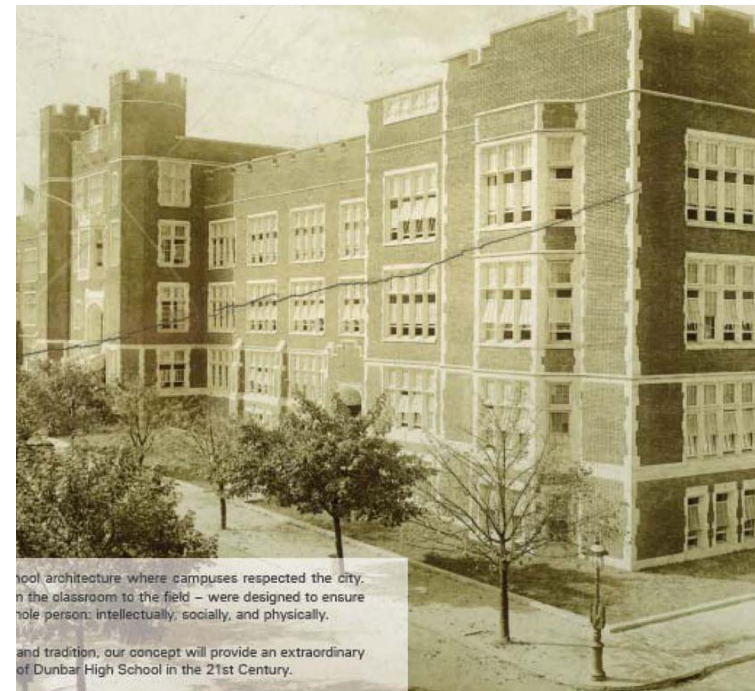


---

Dunbar High School-Building On Tradition

---





Dunbar High School-Building On Tradition

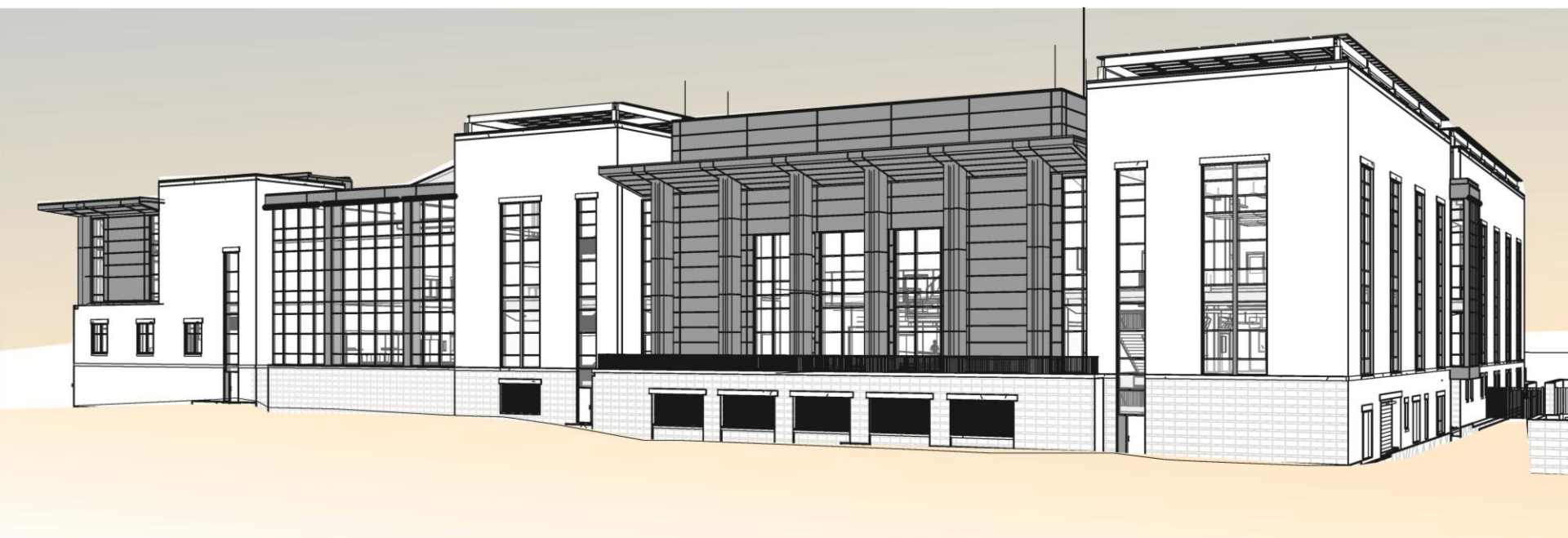


---

Dunbar High School-Building On Tradition

---

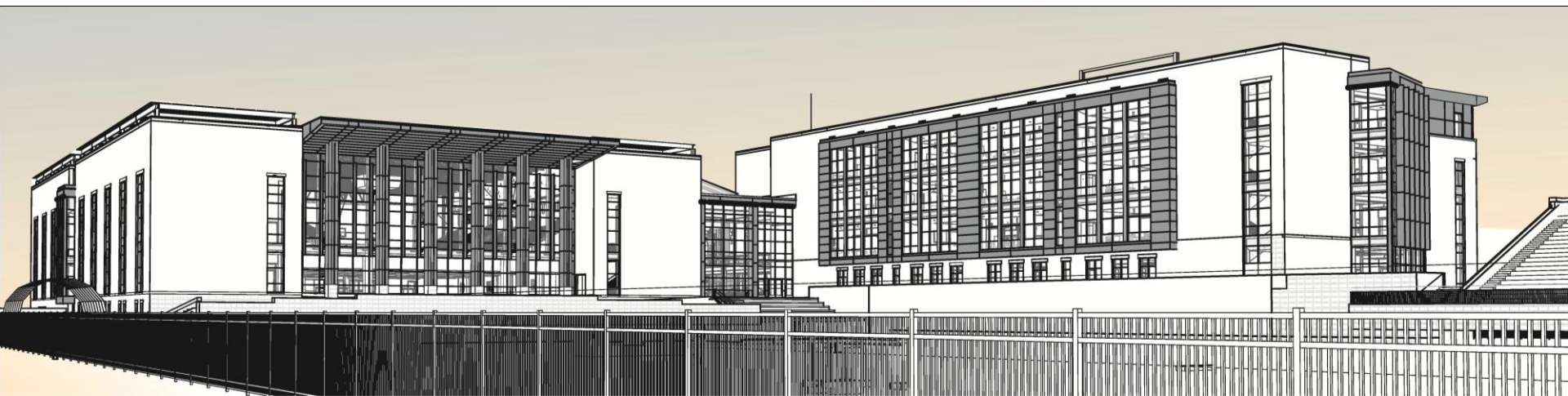




---

Dunbar High School-Building On Tradition

---



---

Dunbar High School-Building On Tradition

---





---

Dunbar High School-Building On Tradition

---



The New Armory





---

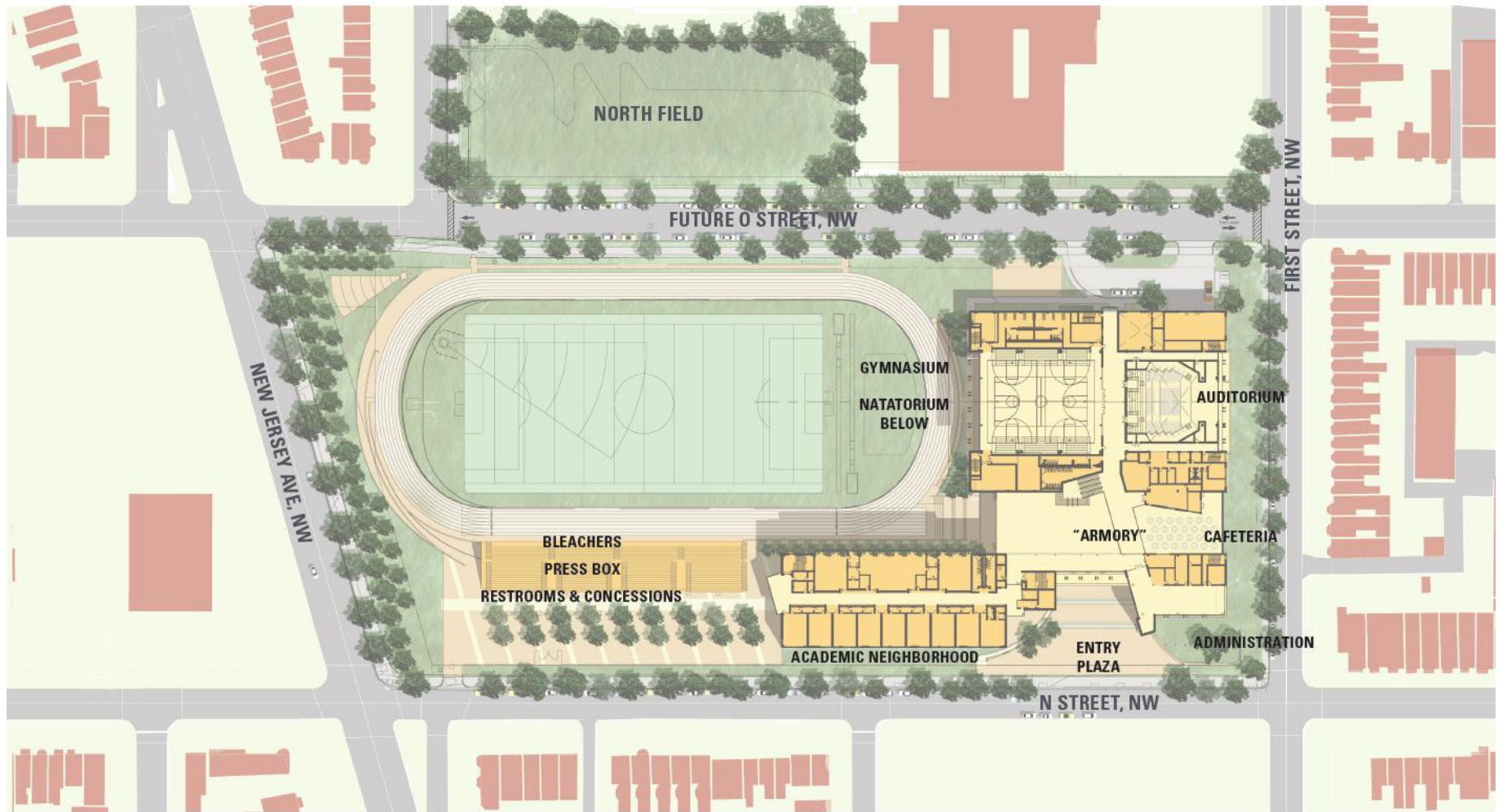
The Media Center

---



Gymnasium





Dunbar High School- Building On Tradition



---

Dunbar High School-Building On Tradition

---