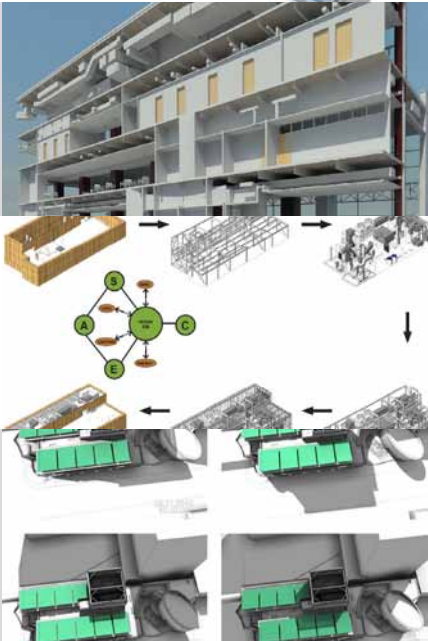


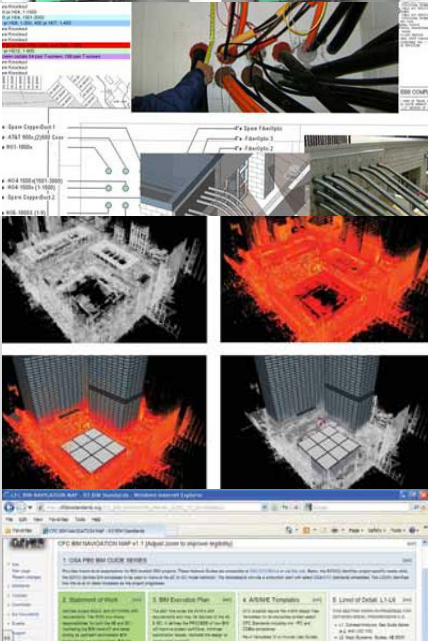
BIM Excellence
CITATION
DC Consolidated Forensic Lab
HOK

“Documented benefits- cost, time and energy reduction driven from the modeling process”

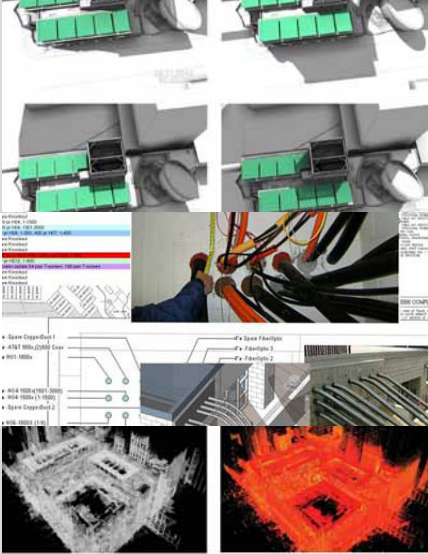
“... clearly focused on leveraging data downstream...”



BIM Excellence
HONORABLE MENTION
Irwin Army Community Hospital
LEO A DALY / RLF Joint Venture



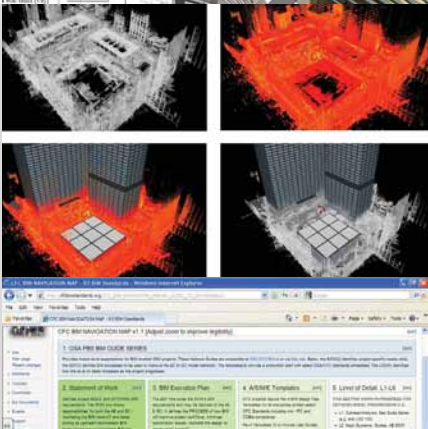
BIM Excellence
HONORABLE MENTION
MassArt New Residence Hall
ADD Inc



BIM Excellence
HONORABLE MENTION
United Therapeutics Phase 2 B
EwingCole



BIM Excellence
HONORABLE MENTION
Wounded Warrior Headquarters & Hope and Care Center
Cass | Sowatsky | Chapman + Associates



BIM Delivery Process Innovation
(in association with BIMForum)
CITATION
Chicago Federal Center — GSA BIM Deployment Process
General Services Administration

“Documenting the process as lessons learned from the projects and disseminating throughout the region.”

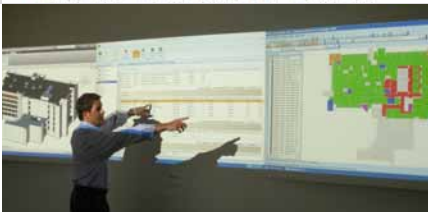
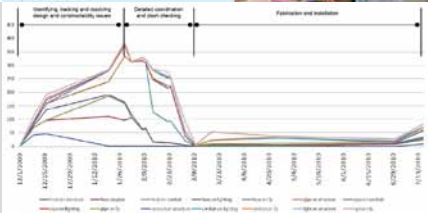
“...” open standards to advance interoperability.”

2011 JURY MEMBERS
Joseph G. Burns, FAIA - Thornton-Tomasetti Group - Chicago, IL, Jury Chair
Luciana Burdi, Ph.D. - State of Massachusetts Office of Planning, Design and Construction Division of Capital Asset Management - Boston, MA
Marty Doscher - Synthesis Technology Integration- Venice, CA
Rodd Merchant, P.E. - JE Dunn Construction - Denver, CO
Kimon Onuma, FAIA - Onuma, Inc. — Pasadena, CA



BIM Delivery Process Innovation
(in association with BIMForum)
CITATION
Seattle Children's Bellevue Clinic
NBBJ

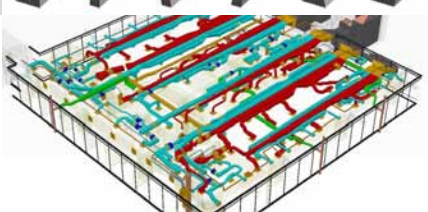
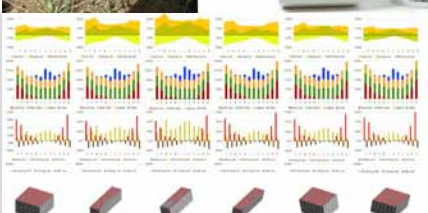
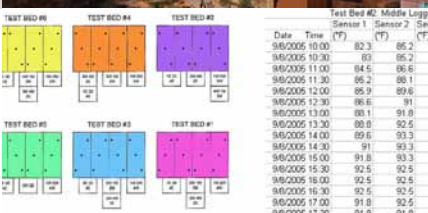
“IFOA and LEAN... eliminated the loss of or re-creation of data throughout the project.”



BIM Delivery Process Innovation
(in association with BIMForum)
HONORABLE MENTION
Dr. A. H. McCoy Federal Building
Ghafari Associates

BIM Delivery Process Innovation
BIMForum PROFESSIONAL'S CHOICE AWARD WINNER
HONORABLE MENTION
Jesse H. Jones Hall Renovations
Morris Architects

BIM Delivery Process Innovation
(in association with BIMForum)
HONORABLE MENTION
MassArt New Residence Hall
ADD Inc



Outstanding Sustainable Design
CITATION
Camelview Village
David Hovey & Associates

“Model based design and engineering decisions are linked to business outcomes.”

“clearly focused from the beginning on minimizing the use of energy and driving a sustainable development”

Academic Program / Curriculum Development
HONORABLE MENTION
Next Level BIM: Integrated Design with BIM for Architectural Engineering Students
University of Wyoming

Exemplary use of BIM in a Small Firm
HONORABLE MENTION
Craniofacial & Mesenchymal Lab Renovation
BlakeDrucker Architects

< continued from front cover

...Towards Collaboration

Similarly, innovations like Lean principals and methodologies were highlighted in several successful submissions. Lean focuses on creating a culture of continuous improvement driven toward maximizing customer value and eliminating waste from production.

In the Seattle Children's Bellevue Clinic (SCBC), for example, the team leveraged IPD and took full advantage of BIM to improve their design and construction process. By integrating trade subcontractors with engineering design to produce CD's, shop drawings, and as-builts from a single model they were able to eliminate re-work.

On the Sustainability side, even if the jury was slightly disappointed by the number of submissions, the few submitted were excellent. The Camelview Village project is an exemplary case of a private developer, Architect, engineers and contractor, emphasizing integrated workflows based on an IPD like structure that enabled model based energy analysis, solar studies while simultaneously leveraging the model for structural analysis and 4D construction sequencing to push the BIM/technology boundaries in a way very few others have done.

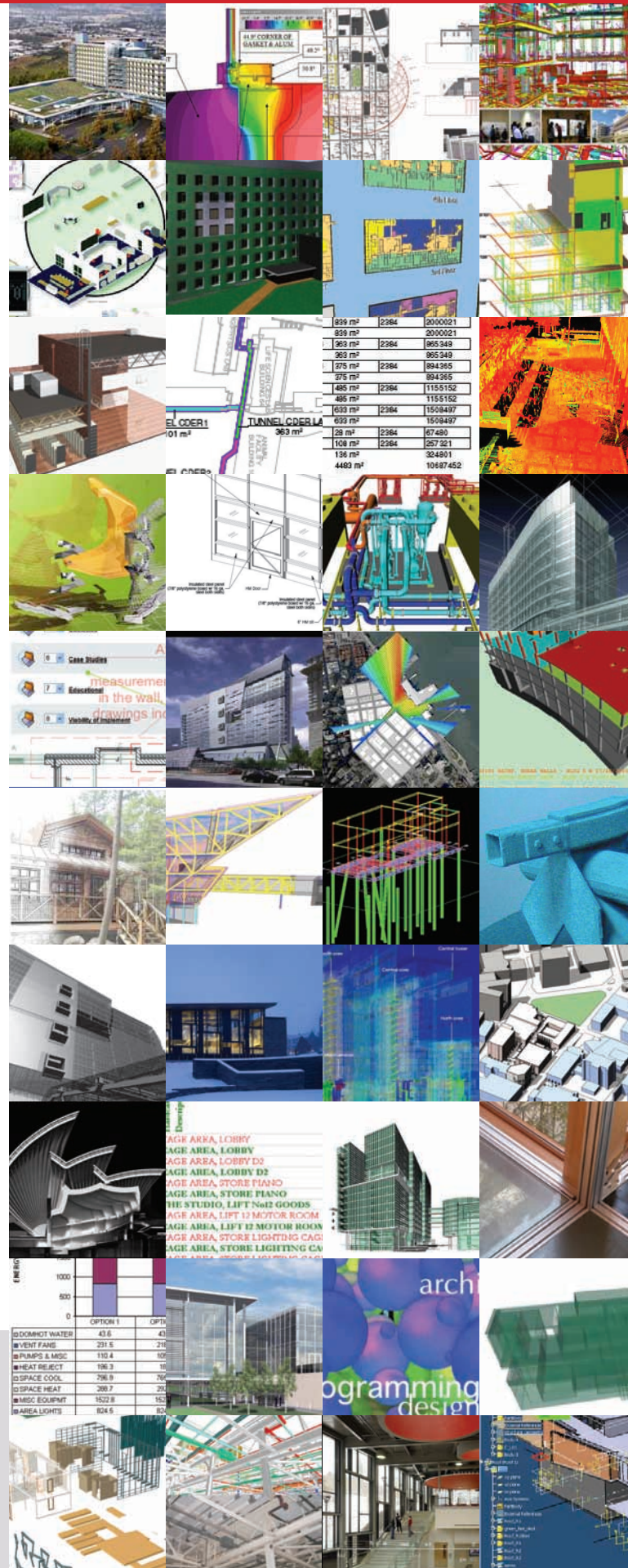
In its second year, the Academic Programs category produced submissions that reflect the variety of ways to approach the integration of BIM in a college/university curriculum. From a single first-year BIM course to a sequence of BIM classes at each successive year, to employing BIM within a studio environment, with the intent of training the next generation of professionals. The AIA TAP leadership is considering to develop a student BIM award category that seeks to allow talented students to showcase their academic work that may or may not be part of a specific BIM course.

The majority of submissions across all categories emphasized that collaboration is an essential ingredient to successfully employing BIM on projects large and small, and firms of all sizes. BIM continues to evolve in new ways that deepens collaboration and expands our capabilities to meet the needs of tomorrow's design.



2011 TAP ADVISORY GROUP

CALVIN KAM, AIA, PHD, PE, CHAIR
STEPHEN HAGAN, FAIA (PAST CHAIR)
TONY RINELLA (PAST CHAIR)
MIKE KENIG
DAVID SCHEER, AIA
PETE EVANS, AIA
CRYSTAL WILSON
KIMON ONUMA, FAIA
MARTY DOSCHER
BRIAN SKRIPAC
LUCIANA BURDI
KAREN KENSEK



2011 BIM Awards

7th Annual

The AIA Technology in Architectural Practice (TAP) presents its 7th Annual Building Information Modeling (BIM) Awards honoring projects that have used technology as a mechanism to bridge the gap between people and processes.

The 2011 Awards reveal how BIM is advancing from a pure tool to a catalyst of a more collaborative design and construction process. Energy efficiency, sustainability, program analysis, metadata exchange and design-to-fabrications are some of the attributes of this year's submissions.

See www.aia.org/tap for more of the collaborative efforts embodied by this year's award recipients and compare them to winners from previous years.

Towards Collaboration

by Luciana Burdi, Michael Schroeder

After seven years of the AIA TAP BIM Awards, the jury noticed a major shift towards a more collaborative use of BIM. Submissions underlined how BIM has facilitated interactions among disciplines. Architects and consultants teamed up and engaged with the construction managers or General Contractors. Owners became highly involved in exploring and mining future benefits that BIM approaches profess.

This does not only apply to large firms and large projects. The same benefits have been found in projects submitted in the "small firms" category. Even though there were not many submissions in this category, the level of BIM development is nearly identical with large firm projects. Boasting projects with extensive BIM uses, high level of detail and committed participation from stakeholders these small firms are reinforcing the same patterns as their larger firm cousins.

Consistent among all submission categories were references to IPD and Lean. Proponents of IPD see the current contract practices that encourage shedding risk and self protection as the primary barriers to improved project performance through better collaboration. The main goals of IPD are to align project objectives and create a collaborative, cross-functional team to maximize project value for all stakeholders.

continued on back cover >

2011 CIRCLE MEMBERS OF
AIA TECHNOLOGY IN ARCHITECTURAL PRACTICE

GRAPHISOFT®

Newforma®